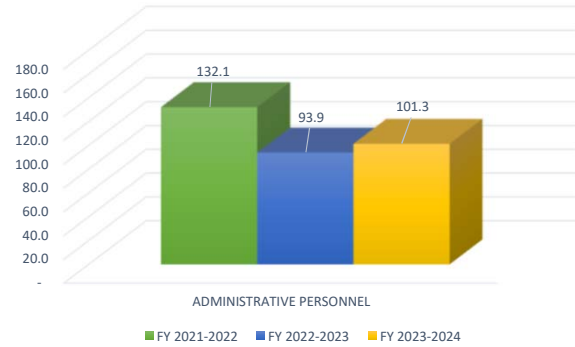


0601 CRESTVIEW HIGH SCHOOL

RATIO OF FULL-TIME EQUIVALENT STUDENTS TO FULL-TIME EQUIVALENT INSTRUCTIONAL PERSONNEL



RATIO OF FULL-TIME EQUIVALENT STUDENTS TO FULL-TIME EQUIVALENT ADMINISTRATIVE PERSONNEL



TOTAL INSTRUCTIONAL EXPENDITURES PER FULL-TIME EQUIVALENT STUDENT



TOTAL OPERATING EXPENDITURES PER FULL-TIME EQUIVALENT STUDENT



GENERAL ADMINISTRATIVE EXPENDITURES AS A PERCENTAGE OF TOTAL EXPENDITURES

