



SCHOOL DISTRICT OF OKALOOSA COUNTY
Proposed Operating Budgets

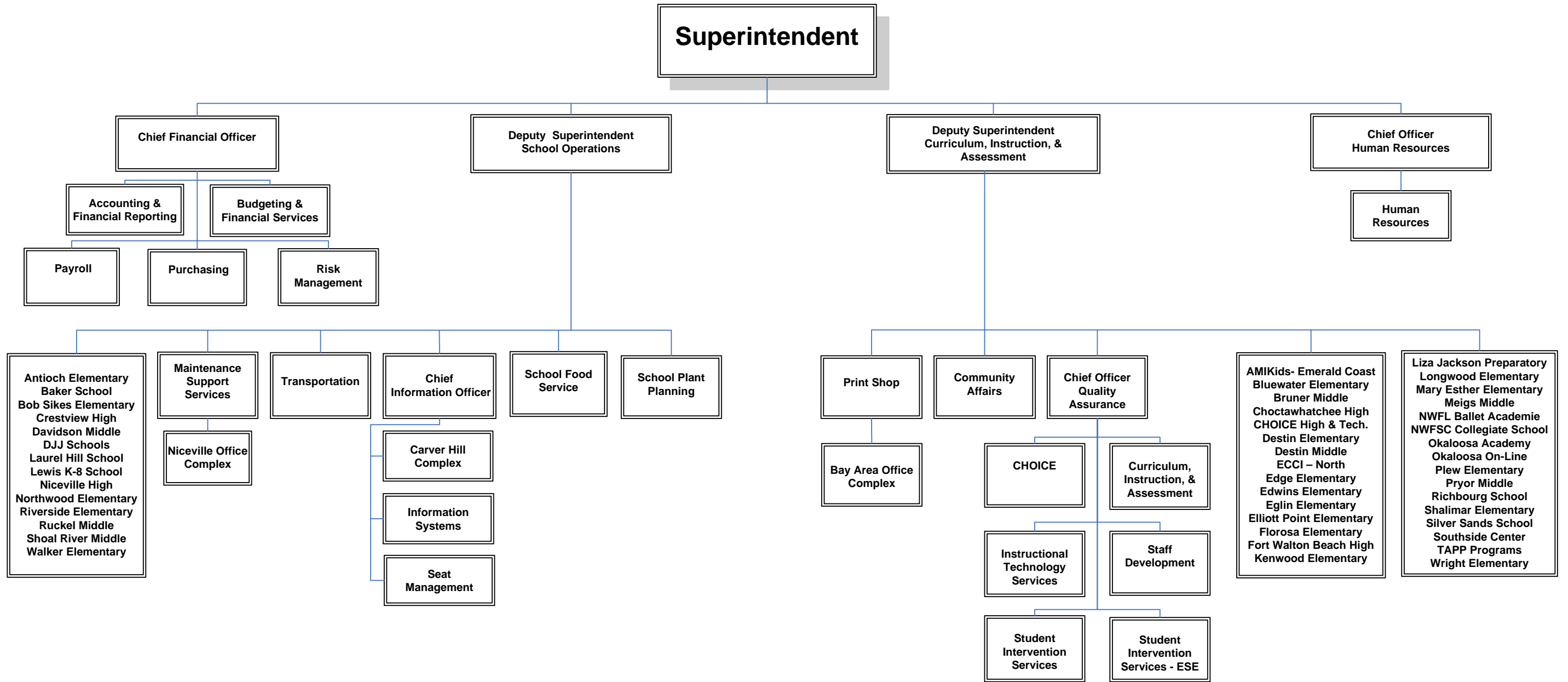
General Fund – District Departments & Debt Service Fund

Fiscal Year 2012-2013

**The Budget Narrative
Summary will be provided on
Wednesday, July 18, 2012.**

School District of Okaloosa County

ORGANIZATIONAL CHART
Fiscal Year 2012-2013



School District of Okaloosa County
District Level Downsizing
Summary
Fiscal Years 2012-2013, 2011-2012, 2010-2011, 2009-2010, 2008-2009, 2007-2008, and 2006-2007
Revised July 18, 2012

	Fiscal Year 2012-2013 (Savings) Costs	Fiscal Year 2011-2012 (Savings) Costs	Fiscal Year 2010-2011 (Savings) Costs	Fiscal Year 2009-2010 (Savings) Costs	Fiscal Year 2008-2009 (Savings) Costs	Fiscal Year 2007-2008 (Savings) Costs	Fiscal Year 2006-2007 (Savings) Costs	Total Combined (Savings) Costs
<u>Fiscal Year 2012-2013 Proposed Action</u>								
<u>Proposed Positions Deleted</u>								
General Fund - Discretionary	\$ (100,447)	\$ -	\$ -	\$ -	\$ -	\$ -	\$ -	\$ (100,447)
Other General Fund Projects	(48,912)	-	-	-	-	-	-	(48,912)
Other Special Revenue Projects	(71,468)	-	-	-	-	-	-	(71,468)
Positions to be Held Vacant for Fiscal Year 2012-2013	-	-	-	-	-	-	-	-
Subtotal Positions Deleted	(220,827)	-	-	-	-	-	-	(220,827)
<u>Proposed Positions Added</u>								
General Fund - Discretionary	177,477	-	-	-	-	-	-	177,477
Other General Fund Projects	44,352	-	-	-	-	-	-	44,352
Other Special Revenue Projects	20,619	-	-	-	-	-	-	20,619
Subtotal Positions Added	242,448	-	-	-	-	-	-	242,448
Total Fiscal Year 2012-2013 Net Proposed (Savings) Costs	\$ 21,621	\$ -	\$ -	\$ -	\$ -	\$ -	\$ -	\$ 21,621
<u>Fiscal Year 2011-2012 Action</u>								
<u>Positions Deleted</u>								
General Fund - Discretionary	\$ (714,028)	\$ (616,272)	\$ -	\$ -	\$ -	\$ -	\$ -	\$ (1,330,300)
Other General Fund Projects	(176,433)	(170,416)	-	-	-	-	-	(346,849)
Other Special Revenue Projects	(372,079)	(356,668)	-	-	-	-	-	(728,747)
Positions to be Held Vacant for Fiscal Year 2011-2012	-	-	-	-	-	-	-	-
Subtotal Positions Deleted	(1,262,540)	(1,143,356)	-	-	-	-	-	(2,405,896)
<u>Positions Added</u>								
General Fund - Discretionary	598,630	506,999	-	-	-	-	-	1,105,629
Other General Fund Projects	318,671	270,374	-	-	-	-	-	589,045
Other Special Revenue Projects	223,765	223,765	-	-	-	-	-	447,530
Subtotal Positions Added	1,141,066	1,001,138	-	-	-	-	-	2,142,204
Total Fiscal Year 2011-2012 Net (Savings) Costs	\$ (121,474)	\$ (142,218)	\$ -	\$ -	\$ -	\$ -	\$ -	\$ (263,692)
<u>Fiscal Year 2010-2011 Action</u>								
<u>Positions Deleted</u>								
General Fund - Discretionary	\$ (1,236,410)	\$ (1,236,410)	\$ (1,007,047)	\$ -	\$ -	\$ -	\$ -	\$ (3,479,867)
Other General Fund Projects	(83,106)	(83,106)	(50,561)	-	-	-	-	(216,773)
Other Special Revenue Projects	(308,739)	(308,739)	(237,012)	-	-	-	-	(854,490)
Positions to be Held Vacant for Fiscal Year 2010-2011	-	-	-	-	-	-	-	-
Subtotal Positions Deleted	(1,628,255)	(1,628,255)	(1,294,620)	-	-	-	-	(4,551,130)
<u>Positions Added</u>								
General Fund - Discretionary	900,027	900,027	676,772	-	-	-	-	2,476,826
Other General Fund Projects	49,681	49,681	21,038	-	-	-	-	120,400
Other Special Revenue Projects	236,875	236,875	217,304	-	-	-	-	691,054
Subtotal Positions Added	1,186,583	1,186,583	915,114	-	-	-	-	3,288,280
Total Fiscal Year 2010-2011 Net (Savings) Costs	\$ (441,672)	\$ (441,672)	\$ (379,506)	\$ -	\$ -	\$ -	\$ -	\$ (1,262,850)

School District of Okaloosa County
District Level Downsizing
Summary
Fiscal Years 2012-2013, 2011-2012, 2010-2011, 2009-2010, 2008-2009, 2007-2008, and 2006-2007
Revised July 18, 2012

	Fiscal Year 2012-2013 (Savings) Costs	Fiscal Year 2011-2012 (Savings) Costs	Fiscal Year 2010-2011 (Savings) Costs	Fiscal Year 2009-2010 (Savings) Costs	Fiscal Year 2008-2009 (Savings) Costs	Fiscal Year 2007-2008 (Savings) Costs	Fiscal Year 2006-2007 (Savings) Costs	Total Combined (Savings) Costs
<u>Fiscal Year 2009-2010 Action</u>								
<u>Positions Deleted</u>								
General Fund - Discretionary	\$ (941,962)	\$ (941,962)	\$ (941,962)	\$ (884,689)	\$ -	\$ -	\$ -	\$ (3,710,575)
Other General Fund Projects	(209,109)	(209,109)	(209,109)	(209,109)	-	-	-	(836,436)
Other Special Revenue Projects	(302,276)	(302,276)	(302,276)	(302,276)	-	-	-	(1,209,104)
Positions to be Held Vacant for Fiscal Year 2009-2010	-	-	-	(403,292)	-	-	-	(403,292)
Subtotal Positions Deleted	(1,453,347)	(1,453,347)	(1,453,347)	(1,799,366)	-	-	-	(6,159,407)
<u>Positions Added</u>								
General Fund - Discretionary	649,177	649,177	649,177	603,398	-	-	-	2,550,929
Other General Fund Projects	27,155	27,155	27,155	27,155	-	-	-	108,620
Other Special Revenue Projects	433,648	433,648	433,648	433,648	-	-	-	1,734,592
Subtotal Positions Added	1,109,980	1,109,980	1,109,980	1,064,201	-	-	-	4,394,141
Total Fiscal Year 2009-2010 Net (Savings) Costs	\$ (343,367)	\$ (343,367)	\$ (343,367)	\$ (735,165)	\$ -	\$ -	\$ -	\$ (1,765,266)
<u>Fiscal Year 2008-2009 Action</u>								
<u>Positions Deleted</u>								
General Fund - Discretionary	\$ (1,331,960)	\$ (1,331,960)	\$ (1,331,960)	\$ (1,331,960)	\$ (1,086,955)	\$ -	\$ -	\$ (6,414,795)
Other General Fund Projects	(193,687)	(193,687)	(193,687)	(193,687)	(174,800)	-	-	(949,548)
Other Special Revenue Projects	(225,955)	(225,955)	(225,955)	(225,955)	(190,162)	-	-	(1,093,982)
Subtotal Positions Deleted	(1,751,602)	(1,751,602)	(1,751,602)	(1,751,602)	(1,451,917)	-	-	(8,458,325)
<u>Positions Added</u>								
General Fund - Discretionary	910,892	910,892	910,892	910,892	814,040	-	-	4,457,608
Other General Fund Projects	45,518	45,518	45,518	45,518	37,553	-	-	219,625
Other Special Revenue Projects	94,280	94,280	94,280	94,280	24,051	-	-	401,171
Subtotal Positions Added	1,050,690	1,050,690	1,050,690	1,050,690	875,644	-	-	5,078,404
Total Fiscal Year 2008-2009 Net (Savings) Costs	\$ (700,912)	\$ (700,912)	\$ (700,912)	\$ (700,912)	\$ (576,273)	\$ -	\$ -	\$ (3,379,921)
<u>Fiscal Year 2007-2008 Action</u>								
<u>Positions Deleted</u>								
General Fund - Discretionary	\$ (2,298,316)	\$ (2,298,316)	\$ (2,298,316)	\$ (2,298,316)	\$ (2,298,316)	\$ (1,732,832)	\$ -	\$ (13,224,412)
Other General Fund Projects	(77,297)	(77,297)	(77,297)	(77,297)	(77,297)	(77,297)	-	(463,782)
Other Special Revenue Projects	(107,157)	(107,157)	(107,157)	(107,157)	(107,157)	(97,605)	-	(633,390)
Subtotal Positions Deleted	(2,482,770)	(2,482,770)	(2,482,770)	(2,482,770)	(2,482,770)	(1,907,734)	-	(14,321,584)
<u>Positions Added</u>								
General Fund - Discretionary	2,554,975	2,554,975	2,554,975	2,554,975	2,554,975	1,856,462	-	14,631,337
Other General Fund Projects	187,498	187,498	187,498	187,498	187,498	158,226	-	1,095,716
Other Special Revenue Projects	-	-	-	-	-	129,533	-	129,533
Subtotal Positions Added	2,742,473	2,742,473	2,742,473	2,742,473	2,742,473	2,144,221	-	15,856,586
Total Fiscal Year 2007-2008 Net (Savings) Costs	\$ 259,703	\$ 259,703	\$ 259,703	\$ 259,703	\$ 259,703	\$ 236,487	\$ -	\$ 1,535,002

School District of Okaloosa County
District Level Downsizing

Summary

Fiscal Years 2012-2013, 2011-2012, 2010-2011, 2009-2010, 2008-2009, 2007-2008, and 2006-2007
Revised July 18, 2012

	Fiscal Year 2012-2013 (Savings) Costs	Fiscal Year 2011-2012 (Savings) Costs	Fiscal Year 2010-2011 (Savings) Costs	Fiscal Year 2009-2010 (Savings) Costs	Fiscal Year 2008-2009 (Savings) Costs	Fiscal Year 2007-2008 (Savings) Costs	Fiscal Year 2006-2007 (Savings) Costs	Total Combined (Savings) Costs
<u>Fiscal Year 2006-2007 Action</u>								
<u>Positions and Contracts Deleted</u>								
General Fund - Discretionary	\$ (996,560)	\$ (996,560)	\$ (996,560)	\$ (996,560)	\$ (996,560)	\$ (996,560)	\$ (420,700)	\$ (6,400,060)
Other General Fund Projects	(201,151)	(201,151)	(201,151)	(201,151)	(201,151)	(201,151)	(115,995)	(1,322,901)
<i>Subtotal Positions Deleted</i>	(1,197,711)	(1,197,711)	(1,197,711)	(1,197,711)	(1,197,711)	(1,197,711)	(536,695)	(7,722,961)
Contracts Deleted in Reorganization	(80,000)	(80,000)	(80,000)	(80,000)	(80,000)	(80,000)	(80,000)	(560,000)
<i>Subtotal Positions Deleted</i>	(1,277,711)	(1,277,711)	(1,277,711)	(1,277,711)	(1,277,711)	(1,277,711)	(616,695)	(8,282,961)
<u>Positions Added</u>								
General Fund - Discretionary	591,208	591,208	591,208	591,208	591,208	591,208	227,929	3,775,177
Other General Fund Projects	197,308	197,308	197,308	197,308	197,308	197,308	109,603	1,293,451
<i>Subtotal Positions Added</i>	788,516	788,516	788,516	788,516	788,516	788,516	337,532	5,068,628
Total Fiscal Year 2006-2007 Net (Savings) Costs	\$ (489,195)	\$ (489,195)	\$ (489,195)	\$ (489,195)	\$ (489,195)	\$ (489,195)	\$ (279,163)	\$ (3,214,333)
<u>Fiscal Years 2012-2013, 2011-2012, 2010-2011, 2009-2010, 2008-2009, 2007-2008, and 2006-2007</u>								
Total (Savings) Costs	\$ (1,815,296)	\$ (1,857,661)	\$ (1,653,277)	\$ (1,665,569)	\$ (805,765)	\$ (252,708)	\$ (279,163)	\$ (8,329,439)

School District of Okaloosa County
District Level Downsizing

Summary

Fiscal Years 2012-2013, 2011-2012, 2010-2011, 2009-2010, 2008-2009, 2007-2008, and 2006-2007
Revised July 18, 2012

Fiscal Year	No. of Positions Net (Savings)/ Costs	Fiscal Year 2012-2013 Net (Savings)/ Costs	Fiscal Year 2011-2012 Net (Savings)/ Costs	Fiscal Year 2010-2011 Net (Savings)/ Costs	Fiscal Year 2009-2010 Net (Savings)/ Costs	Fiscal Year 2008-2009 Net (Savings)/ Costs	Fiscal Year 2007-2008 Net (Savings)/ Costs	Fiscal Year 2006-2007 Net (Savings)/ Costs	Total Combined Net (Savings)/ Costs
2012-2013	1.32	\$ 21,621	\$ -	\$ -	\$ -	\$ -	\$ -	\$ -	\$ 21,621
2011-2012	(0.91)	(121,474)	(142,218)	-	-	-	-	-	(263,692)
2010-2011	(6.62)	(441,672)	(441,672)	(379,506)	-	-	-	-	(1,262,850)
2009-2010	(5.08)	(343,367)	(343,367)	(343,367)	(735,165)	-	-	-	(1,765,266)
2008-2009	(8.86)	(700,912)	(700,912)	(700,912)	(700,912)	(576,273)	-	-	(3,379,921)
2007-2008	8.12	259,703	259,703	259,703	259,703	259,703	236,487	-	1,535,002
2006-2007	(2.60)	(489,195)	(489,195)	(489,195)	(489,195)	(489,195)	(489,195)	(279,163)	(3,214,333)
Total (Savings) Costs	(14.63)	\$ (1,815,296)	\$ (1,857,661)	\$ (1,653,277)	\$ (1,665,569)	\$ (805,765)	\$ (252,708)	\$ (279,163)	\$ (8,329,439)

School District of Okaloosa County
District Level Downsizing
Fiscal Year 2012-2013 Action
Revised July 18, 2012

Position Type	Department Name	Fund	Project Name	Project Number	Position Added (A) /Deleted (D)	Position Code	Number of Months	Position	Effective Date	Fiscal Year 2012-2013 (Savings)	Fiscal Year 2011-2012 (Savings)	Fiscal Year 2010-2011 (Savings)	Fiscal Year 2009-2010 (Savings)	Fiscal Year 2008-2009 (Savings)	Fiscal Year 2007-2008 (Savings)	Fiscal Year 2006-2007 (Savings)	Total (Savings)	
District Level Secretary	Accounting & Financial Reporting	General	Discretionary	N/A	D	N	12 Month	(1.00)	July 1, 2012	\$ (27,561)	\$ -	\$ -	\$ -	\$ -	\$ -	\$ -	\$ (27,561)	
District Level Secretary	Information Systems	General	Discretionary	N/A	D	N	10 Month	(0.53)	August 6, 2012	(25,274)	-	-	-	-	-	-	(25,274)	
Specialist	Student Intervention Services	General	Discretionary	N/A	D	A	12 Month	(0.50)	July 1, 2012	(47,612)	-	-	-	-	-	-	(47,612)	
Subtotal General Fund - Discretionary										(2.03)	(100,447)	-	-	-	-	-	(100,447)	
School Psychologist	Student Intervention Services - ESE	General	School Psychologists	2027	D	I	12 Month	(0.50)	July 1, 2012	(48,912)	-	-	-	-	-	-	(48,912)	
Subtotal Other General Fund Projects										(0.50)	(48,912)	-	-	-	-	-	(48,912)	
District Level Secretary	Student Intervention Services - ESE	Special Revenue	IDEA	3475	D	N	12 Month	(1.00)	July 1, 2012	(36,920)	-	-	-	-	-	-	(36,920)	
Specialist	Curriculum, Instruction, & Assessment	Special Revenue	Title I	3401	D	A	12 Month	(0.30)	July 1, 2012	(23,228)	-	-	-	-	-	-	(23,228)	
Teacher on Special Assignment	Curriculum, Instruction, & Assessment	Special Revenue	Title I	3401	D	I	12 Month	(0.25)	July 1, 2012	(11,320)	-	-	-	-	-	-	(11,320)	
Subtotal Other Special Revenue Projects										(1.55)	(71,468)	-	-	-	-	-	(71,468)	
Total Positions Deleted in Reorganization										(4.08)	(220,827)	-	-	-	-	-	(220,827)	
Subtotal Contracts										-	-	-	-	-	-	-	-	
Total Savings Fiscal Year 2012-2013										(4.08)	\$ (220,827)	\$ -	\$ -	\$ -	\$ -	\$ -	\$ -	(220,827)
Accountant	Accounting & Financial Reporting	General	Discretionary	N/A	A	N	12 Month	1.00	July 1, 2012	\$ 39,381	\$ -	-	-	-	-	-	\$ 39,381	
District Level Secretary	Curriculum, Instruction, & Assessment	General	Discretionary	N/A	A	N	12 Month	0.05	July 1, 2012	1,846	-	-	-	-	-	-	1,846	
District Level Secretary	Instructional Technology	General	Discretionary	N/A	A	N	12 Month	0.45	July 1, 2012	16,613	-	-	-	-	-	-	16,613	
FTE Data Technician	Information Systems	General	Discretionary	N/A	A	P	12 Month	1.00	July 1, 2012	51,583	-	-	-	-	-	-	51,583	
Mechanic I	Transportation - South	General	Discretionary	N/A	A	N	12 Month	1.00	July 1, 2012	36,920	-	-	-	-	-	-	36,920	
Specialist	Curriculum, Instruction, & Assessment	General	Discretionary	N/A	A	A	12 Month	0.20	July 1, 2012	14,402	-	-	-	-	-	-	14,402	
Teacher, Technology Trainer	Instructional Technology	General	Discretionary	N/A	A	A	12 Month	0.20	July 1, 2012	16,732	-	-	-	-	-	-	16,732	
Subtotal General Fund - Discretionary										3.90	177,477	-	-	-	-	-	177,477	
Computer & Handheld Technician	Information Systems	General	SM - Administrative	4016	A	P	12 Month	1.00	July 1, 2012	44,352	-	-	-	-	-	-	44,352	
Subtotal Other General Fund Projects										1.00	44,352	-	-	-	-	-	44,352	
Teacher on Special Assignment	Curriculum, Instruction, & Assessment	Special Revenue	Title I	3401	A	I	12 Month	0.25	September 1, 2012	9,299	-	-	-	-	-	-	9,299	
Teacher on Special Assignment	Curriculum, Instruction, & Assessment	Special Revenue	Title I Homeless Set-Aside	3408	A	I	12 Month	0.25	July 1, 2012	11,320	-	-	-	-	-	-	11,320	
Subtotal Other Special Revenue Projects										0.50	20,619	-	-	-	-	-	20,619	
Total Positions Added in Reorganization										5.40	242,448	-	-	-	-	-	242,448	
Total Fiscal Year 2012-2013 Net (Savings) Costs										1.32	\$ 21,621	\$ -	\$ -	\$ -	\$ -	\$ -	\$ 21,621	

Legend:
A Administrative Position
M Managerial Position
I Instructional Position
P Professional/Technical Position
N Educational Support Position
C Non-Bargaining Position

School District of Okaloosa County
District Level Downsizing
Fiscal Year 2011-2012 Action
Revised May 25, 2012

Position Type	Department Name	Fund	Project Name	Project Number	Position Added (A) / Deleted (D)	Position Code	Number of Months	Position	Effective Date	Fiscal Year 2012-2013 (Savings)	Fiscal Year 2011-2012 (Savings)	Fiscal Year 2010-2011 (Savings)	Fiscal Year 2009-2010 (Savings)	Fiscal Year 2008-2009 (Savings)	Fiscal Year 2007-2008 (Savings)	Fiscal Year 2006-2007 (Savings)	Total (Savings)	
Assistant Principal II Sr	Student Intervention Services	General	Discretionary	N/A	D	A	12 Month	(0.40)	July 1, 2011	\$ (34,776)	\$ (34,776)	\$ -	\$ -	\$ -	\$ -	\$ -	\$ (69,552)	
District Custodian Hourly	Niceville Central Complex	General	Discretionary	N/A	D	N	12 Month	(0.20)	July 1, 2011	(3,642)	(3,642)	-	-	-	-	-	(7,284)	
District Level Secretary	Information Systems	General	Discretionary	N/A	D	N	12 Month	(1.00)	July 1, 2011	(54,574)	(54,574)	-	-	-	-	-	(109,148)	
District Level Secretary	Information Systems	General	Discretionary	N/A	D	N	12 Month	(1.00)	July 1, 2011	(39,041)	(39,041)	-	-	-	-	-	(78,082)	
District Level Secretary	Purchasing	General	Discretionary	N/A	D	N	12 Month	(1.00)	October 3, 2011	(40,828)	(30,219)	-	-	-	-	-	(71,047)	
Director - Purchasing	Purchasing	General	Discretionary	N/A	D	A	12 Month	(0.40)	October 3, 2011	(48,339)	(35,779)	-	-	-	-	-	(84,118)	
Electrician I	Maintenance Support Services	General	Discretionary	N/A	D	N	12 Month	(1.00)	March 9, 2012	(36,920)	(11,774)	-	-	-	-	-	(48,694)	
Foreman	Maintenance Support Services	General	Discretionary	N/A	D	M	12 Month	(1.00)	July 1, 2011	(75,797)	(75,797)	-	-	-	-	-	(151,594)	
Mechanic	Transportation - South	General	Discretionary	N/A	D	N	12 Month	(1.00)	July 1, 2011	(42,191)	(42,191)	-	-	-	-	-	(84,382)	
Program Director	CHOICE	General	Discretionary	N/A	D	A	12 Month	(0.10)	July 1, 2011	(10,715)	(10,715)	-	-	-	-	-	(21,430)	
Site Based Technician	Maintenance Support Services	General	Discretionary	N/A	D	N	12 Month	(1.00)	February 29, 2012	(36,920)	(12,791)	-	-	-	-	-	(49,711)	
Specialist	CHOICE	General	Discretionary	N/A	D	A	12 Month	(0.50)	July 1, 2011	(55,278)	(55,278)	-	-	-	-	-	(110,556)	
Specialist	Purchasing	General	Discretionary	N/A	D	A	12 Month	(1.00)	October 3, 2011	(82,781)	(61,271)	-	-	-	-	-	(144,052)	
Specialist - Instr. Tech. Inst.	CHOICE	General	Discretionary	N/A	D	A	12 Month	(1.00)	July 1, 2011	(97,907)	(97,907)	-	-	-	-	-	(195,814)	
Testing - Evaluation Technician	Quality Assurance	General	Discretionary	N/A	D	P	12 Month	(1.00)	July 26, 2011	(54,319)	(50,517)	-	-	-	-	-	(104,836)	
Subtotal General Fund - Discretionary									(11.60)	(714,028)	(616,272)	-	-	-	-	-	(1,330,300)	
District Level Clerk	Print Shop	General	Print Shop	9121	D	N	12 Month	(0.53)	August 8, 2011	(16,526)	(14,834)	-	-	-	-	-	(31,360)	
District Level Secretary	Custodial Services	General	Custodial Services	2011	D	N	12 Month	(0.20)	February 1, 2012	(7,525)	(3,200)	-	-	-	-	-	(10,725)	
School Psychologist	Student Intervention Services - ESE	General	School Psychologists	2027	D	I	10 Month	(1.00)	August 15, 2011	(49,681)	(49,681)	-	-	-	-	-	(99,362)	
Specialist	Curriculum, Instruction, & Assessment	General	SAI - Closing the Gap	7119	D	A	12 Month	(1.00)	July 1, 2011	(102,701)	(102,701)	-	-	-	-	-	(205,402)	
Subtotal Other General Fund Projects									(2.73)	(176,433)	(170,416)	-	-	-	-	-	(346,849)	
Accountant	Budgeting & Financial Services	Special Revenue	Stabilization	1460	D	N	12 Month	(1.00)	July 1, 2011	(43,759)	(43,759)	-	-	-	-	-	(87,518)	
Literacy Coach	Staff Development	Special Revenue	Title II	2405	D	I	10 Month	(0.50)	December 5, 2011	(38,236)	(22,825)	-	-	-	-	-	(61,061)	
Literacy Coach	Staff Development	Special Revenue	Title II	2405	D	I	12 Month	(1.00)	July 1, 2011	(87,709)	(87,709)	-	-	-	-	-	(175,418)	
School Psychologist	Student Intervention Services - ESE	Special Revenue	IDEA	2475	D	I	12 Month	(1.00)	July 1, 2011	(109,849)	(109,849)	-	-	-	-	-	(219,698)	
School Psychologist	Student Intervention Services - ESE	Special Revenue	IDEA Pre-K - ARRA	0496	D	I	10 Month	(0.40)	August 15, 2011	(24,833)	(24,833)	-	-	-	-	-	(49,666)	
Social Worker	Student Intervention Services - ESE	Special Revenue	IDEA	2475	D	I	10 Month	(0.60)	August 15, 2011	(43,882)	(43,882)	-	-	-	-	-	(87,764)	
Staffing Specialist	Student Intervention Services - ESE	Special Revenue	IDEA	2475	D	I	12 Month	(0.23)	July 1, 2011	(12,491)	(12,491)	-	-	-	-	-	(24,982)	
Teacher on Special Assignment	Curriculum, Instruction, & Assessment	Special Revenue	Title I	2401	D	I	12 Month	(0.25)	July 1, 2011	(11,320)	(11,320)	-	-	-	-	-	(22,640)	
Subtotal Other Special Revenue Projects									(4.98)	(372,079)	(356,668)	-	-	-	-	-	(728,747)	
Total Positions Deleted in Reorganization									(19.31)	(1,262,540)	(1,143,356)	-	-	-	-	-	(2,405,896)	
Subtotal Contracts									-	-	-	-	-	-	-	-		
Total Savings Fiscal Year 2011-2012									(19.31)	\$ (1,262,540)	\$ (1,143,356)	\$ -	\$ -	\$ -	\$ -	\$ -	\$ -	\$ (2,405,896)

School District of Okaloosa County
District Level Downsizing
Fiscal Year 2011-2012 Action
Revised May 25, 2012

Position Type	Department Name	Fund	Project Name	Project Number	Position Added (A) /Deleted (D)	Position Code	Number of Months	Position	Effective Date	Fiscal Year 2012-2013 (Savings)	Fiscal Year 2011-2012 (Savings)	Fiscal Year 2010-2011 (Savings)	Fiscal Year 2009-2010 (Savings)	Fiscal Year 2008-2009 (Savings)	Fiscal Year 2007-2008 (Savings)	Fiscal Year 2006-2007 (Savings)	Total (Savings)
Accountant	Budgeting & Financial Services	General	Discretionary	N/A	A	N	12 Month	1.00	July 1, 2011	\$ 43,298	\$ 43,298						\$ 86,596
Air Conditioning & Refrigeration	Maintenance Support Services	General	Discretionary	N/A	A	N	12 Month	1.00	February 29, 2012	36,920	12,791						49,711
Air Conditioning & Refrigeration	Maintenance Support Services	General	Discretionary	N/A	A	N	12 Month	1.00	March 9, 2012	36,920	11,774						48,694
Buyer	Purchasing	General	Discretionary	N/A	A	N	12 Month	1.00	October 3, 2011	50,534	37,403						87,937
District Custodian II	Maintenance Support Services	General	Discretionary	N/A	A	N	10 Month	1.00	August 15, 2011	38,440	38,440						76,880
District Level Clerk	Superintendent	General	Discretionary	N/A	A	N	12 Month	0.03	August 8, 2011	946	849						1,795
District Level Secretary	Human Resources	General	Discretionary	N/A	A	N	12 Month	1.00	July 1, 2011	39,041	39,041	-	-	-	-	-	78,082
Eval./Diff. Accountability Analyst	Quality Assurance	General	Discretionary	N/A	A	P	12 Month	1.00	July 26, 2011	73,920	68,746	-	-	-	-	-	142,666
Laborer - Hourly	Transportation - Central	General	Discretionary	N/A	A	N	9 Month	0.04	September 1, 2011	1,081	1,035	-	-	-	-	-	2,116
Program Director	Purchasing	General	Discretionary	N/A	A	A	12 Month	1.00	October 3, 2011	92,009	68,101	-	-	-	-	-	160,110
Specialist	Student Intervention Services	General	Discretionary	N/A	A	A	12 Month	0.50	July 1, 2011	47,717	47,717	-	-	-	-	-	95,434
Specialist - Instr. Tech. Inst.	CHOICE	General	Discretionary	N/A	A	A	10 Month	1.00	August 15, 2011	83,230	83,230	-	-	-	-	-	166,460
Warehouse/Grounds Personnel	Maintenance Support Services	General	Discretionary	N/A	A	N	12 Month	1.00	July 1, 2011	54,574	54,574						109,148
Subtotal General Fund - Discretionary									10.57	598,630	506,999	-	-	-	-	-	1,105,629
District Level Secretary	Custodial Services	General	Custodial Services	2011	A	N	12 Month	1.00	July 1, 2011	41,544	41,544	-	-	-	-	-	83,088
Program Director	Custodial Services	General	Custodial Services	2011	A	A	12 Month	0.40	July 1, 2011	52,229	52,229	-	-	-	-	-	104,458
School Psychologist	Student Intervention Services - ESE	General	School Psychologists	2027	A	I	12 Month	1.00	July 1, 2011	109,849	109,849						219,698
School Psychologist	Student Intervention Services - ESE	General	School Psychologists	2027	A	I	10 Month	0.40	August 15, 2011	22,422	22,422						44,844
School Psychologist	Student Intervention Services - ESE	General	School Psychologists	2027	A	I	10 Month	1.00	January 17, 2012	41,734	20,441						62,175
School Psychologist	Student Intervention Services - ESE	General	School Psychologists	2027	A	I	10 Month	1.00	January 23, 2012	50,893	23,889						74,782
Subtotal Other General Fund Projects									4.80	318,671	270,374	-	-	-	-	-	589,045
Literacy Coach	Staff Development	Special Revenue	Title II	2405	A	I	10 Month	0.50	August 15, 2011	31,880	31,880						63,760
Staffing Specialist	Student Intervention Services - ESE	Special Revenue	IDEA	2475	A	I	10 Month	0.68	August 15, 2011	47,480	47,480						94,960
Specialist	Curriculum, Instruction, & Assessment	Special Revenue	Title I	2401	A	A	12 Month	0.50	July 1, 2011	32,588	32,588						65,176
Specialist	Staff Development	Special Revenue	Title II	2405	A	A	12 Month	1.00	July 1, 2011	91,981	91,981						183,962
Specialist	Curriculum, Instruction, & Assessment	Special Revenue	Title I	2401	A	A	12 Month	0.11	July 1, 2011	8,516	8,516						17,032
Teacher on Special Assignment	Curriculum, Instruction, & Assessment	Special Revenue	Title X Homeless	2412	A	I	12 Month	0.25	July 1, 2011	11,320	11,320						22,640
Subtotal Other Special Revenue Projects									3.04	223,765	223,765	-	-	-	-	-	447,530
Total Positions Added in Reorganization									18.41	1,141,066	1,001,138	-	-	-	-	-	2,142,204
Total Fiscal Year 2011-2012 Net (Savings) Costs									(0.91)	\$ (121,474)	\$ (142,218)	\$ -	\$ -	\$ -	\$ -	\$ -	\$ (263,692)

Legend:
A Administrative Position **P** Professional/Technical Position
M Managerial Position **N** Educational Support Position
I Instructional Position **C** Non-Bargaining Position

School District of Okaloosa County
District Level Downsizing
Fiscal Year 2010-2011 Action
 Revised May 17, 2012

Position Type	Department Name	Fund	Project Name	Project Number	Position Added (A) / Deleted (D)	Position Code	Number of Months	Position	Effective Date	Fiscal Year 2012-2013 (Savings)	Fiscal Year 2011-2012 (Savings)	Fiscal Year 2010-2011 (Savings)	Fiscal Year 2009-2010 (Savings)	Fiscal Year 2008-2009 (Savings)	Fiscal Year 2007-2008 (Savings)	Fiscal Year 2006-2007 (Savings)	Total (Savings)	
Air Conditioning & Refrigeration	Maintenance Support Services	General	Discretionary	N/A	D	N	12 Month	(1.00)	July 1, 2010	(\$ 54,573)	(\$ 54,573)	(\$ 54,573)	\$ -	\$ -	\$ -	\$ -	(\$ 163,719)	
Air Conditioning & Refrigeration	Maintenance Support Services	General	Discretionary	N/A	D	N	12 Month	(1.00)	October 13, 2010	(\$ 54,573)	(\$ 54,573)	(38,674)	-	-	-	-	(147,820)	
Carpenter I	Maintenance Support Services	General	Discretionary	N/A	D	N	12 Month	(1.00)	October 13, 2010	(\$ 54,574)	(\$ 54,574)	(38,674)	-	-	-	-	(147,822)	
Carpenter I	Maintenance Support Services	General	Discretionary	N/A	D	N	12 Month	(1.00)	October 13, 2010	(\$ 54,574)	(\$ 54,574)	(38,674)	-	-	-	-	(147,822)	
Carpenter I	Maintenance Support Services	General	Discretionary	N/A	D	N	12 Month	(1.00)	October 13, 2010	(\$ 54,574)	(\$ 54,574)	(38,674)	-	-	-	-	(147,822)	
Carpenter I	Maintenance Support Services	General	Discretionary	N/A	D	N	12 Month	(1.00)	October 13, 2010	(\$ 54,574)	(\$ 54,574)	(38,674)	-	-	-	-	(147,822)	
Director	CHOICE	General	Discretionary	N/A	D	A	12 Month	(1.00)	July 1, 2010	(97,065)	(97,065)	(97,065)	-	-	-	-	(291,195)	
Director	Curriculum, Instruction & Assessment	General	Discretionary	N/A	D	A	12 Month	(1.00)	July 1, 2010	(97,065)	(97,065)	(97,065)	-	-	-	-	(291,195)	
District Custodian I	Carver Hill Administrative Complex	General	Discretionary	N/A	D	N	12 Month	(1.00)	July 1, 2010	(56,468)	(56,468)	(56,468)	-	-	-	-	(169,404)	
District Level Clerk	Maintenance Support Services	General	Discretionary	N/A	D	N	12 Month	(1.00)	September 29, 2010	(34,431)	(34,431)	(25,755)	-	-	-	-	(94,617)	
District Level Secretary	Human Resources	General	Discretionary	N/A	D	N	12 Month	(0.83)	July 1, 2010	(40,122)	(40,122)	(40,122)	-	-	-	-	(120,366)	
District Level Secretary	Student Intervention Services	General	Discretionary	N/A	D	N	12 Month	(0.50)	July 1, 2010	(21,708)	(21,708)	(21,708)	-	-	-	-	(65,124)	
District Level Secretary	Student Intervention Services - ESE	General	Discretionary	N/A	D	N	12 Month	(0.50)	July 1, 2010	(21,708)	(21,708)	(21,708)	-	-	-	-	(65,124)	
Electrician I	Maintenance Support Services	General	Discretionary	N/A	D	N	12 Month	(1.00)	October 13, 2010	(42,448)	(42,448)	(30,081)	-	-	-	-	(114,977)	
Heavy Equipment Operator	Maintenance Support Services	General	Discretionary	N/A	D	N	12 Month	(1.00)	October 13, 2010	(40,974)	(40,974)	(29,037)	-	-	-	-	(110,985)	
Human Resource Analyst	Human Resources	General	Discretionary	N/A	D	N	9 Month	(1.00)	July 1, 2010	(45,902)	(45,902)	(45,902)	-	-	-	-	(137,706)	
Laborez	Transportation - North	General	Discretionary	N/A	D	N	9 Month	(0.06)	July 1, 2010	(821)	(821)	(821)	-	-	-	-	(2,463)	
Mechanic I	Maintenance Support Services	General	Discretionary	N/A	D	N	12 Month	(1.00)	October 13, 2010	(55,893)	(55,893)	(39,608)	-	-	-	-	(151,395)	
Plant Operator	Maintenance Support Services	General	Discretionary	N/A	D	N	12 Month	(1.00)	October 13, 2010	(38,500)	(38,500)	(27,283)	-	-	-	-	(104,283)	
Plant Operator	Maintenance Support Services	General	Discretionary	N/A	D	N	12 Month	(1.00)	October 13, 2010	(46,422)	(46,422)	(32,897)	-	-	-	-	(125,741)	
Plant Operator	Maintenance Support Services	General	Discretionary	N/A	D	N	12 Month	(1.00)	October 13, 2010	(\$ 54,574)	(\$ 54,574)	(38,674)	-	-	-	-	(147,822)	
Plant Operator	Maintenance Support Services	General	Discretionary	N/A	D	N	12 Month	(1.00)	October 13, 2010	(55,586)	(55,586)	(39,392)	-	-	-	-	(150,564)	
Plumber I	Maintenance Support Services	General	Discretionary	N/A	D	N	12 Month	(1.00)	October 13, 2010	(55,894)	(55,894)	(39,610)	-	-	-	-	(151,398)	
Plumber I	Maintenance Support Services	General	Discretionary	N/A	D	N	12 Month	(1.00)	October 13, 2010	(56,563)	(56,563)	(40,084)	-	-	-	-	(153,210)	
Specialist	Student Intervention Services	General	Discretionary	N/A	D	A	12 Month	(0.50)	October 13, 2010	(38,504)	(38,504)	(27,503)	-	-	-	-	(104,511)	
Supervisor, Safety	Maintenance Support Services	General	Discretionary	N/A	D	M	12 Month	(0.08)	July 1, 2010	(8,320)	(8,320)	(8,320)	-	-	-	-	(24,960)	
Subtotal General Fund - Discretionary										(22.47)	(1,236,410)	(1,236,410)	(1,007,047)	-	-	-	-	(3,479,867)
School Psychologist	Student Intervention Services - ESE	General	School Psychologists	2027	D	I	12 Month	(1.00)	January 24, 2011	(59,046)	(59,046)	(26,501)	-	-	-	-	(144,593)	
Staffing Specialist ESE	Student Intervention Services - ESE	General	Itinerant - Staffing Spec.	5012	D	I	10 Month	(0.10)	August 2, 2010	(8,916)	(8,916)	(8,916)	-	-	-	-	(26,748)	
Supervisor	Print Shop/Bay Area Office	General	Print Shop	9121	D	M	12 Month	(0.20)	July 1, 2010	(15,144)	(15,144)	(15,144)	-	-	-	-	(45,432)	
Subtotal Other General Fund Projects										(1.30)	(83,106)	(83,106)	(50,561)	-	-	-	-	(216,773)
Home/School Liason	Curriculum, Instruction & Assessment	Special Revenue	Title I	1401	D	N	10 Month	(0.20)	August 10, 2010	(12,310)	(12,310)	(12,310)	-	-	-	-	(36,930)	
Home/School Liason	Curriculum, Instruction & Assessment	Special Revenue	Title I	1401	D	N	10 Month	(0.80)	October 1, 2010	(61,552)	(61,552)	(47,734)	-	-	-	-	(170,838)	
Homeless Liason	Curriculum, Instruction & Assessment	Special Revenue	Title I	1401	D	A	12 Month	(0.20)	July 1, 2010	(15,896)	(15,896)	(15,896)	-	-	-	-	(47,688)	
Program Director	Curriculum, Instruction & Assessment	Special Revenue	Title I	1401	D	A	12 Month	(0.50)	September 28, 2010	(48,906)	(48,906)	(36,776)	-	-	-	-	(134,588)	
Literacy Coach	Staff Development	Special Revenue	Title II - Part A	1405	D	I	10 Month	(1.50)	August 2, 2010	(82,281)	(82,281)	(82,281)	-	-	-	-	(246,843)	
Specialist	Student Intervention Services - ESE	Special Revenue	IDEA - Part B	1475	D	A	12 Month	(0.20)	July 1, 2010	(19,819)	(19,819)	(19,819)	-	-	-	-	(59,457)	
Student Service Worker	Student Intervention Services - ESE	Special Revenue	Stabilization	1460	D	N	10 Month	(1.00)	February 18, 2011	(67,975)	(67,975)	(22,196)	-	-	-	-	(158,146)	
Subtotal Other Special Revenue Projects										(4.40)	(308,739)	(308,739)	(237,012)	-	-	-	-	(854,490)
Total Positions Deleted in Reorganization										(28.17)	(1,628,255)	(1,628,255)	(1,294,620)	-	-	-	-	(4,551,130)
Subtotal Contracts										-	-	-	-	-	-	-	-	-
Total Savings Fiscal Year 2010-2011										(28.17)	\$(1,628,255)	\$(1,628,255)	\$(1,294,620)	\$ -	\$ -	\$ -	\$ -	\$(4,551,130)

School District of Okaloosa County
District Level Downsizing
Fiscal Year 2010-2011 Action
Revised May 17, 2012

Position Type	Department Name	Fund	Project Name	Project Number	Position Added (A) /Deleted (D)	Position Code	Number of Months	Position	Effective Date	Fiscal Year 2012-2013 (Savings)	Fiscal Year 2011-2012 (Savings)	Fiscal Year 2010-2011 (Savings)	Fiscal Year 2009-2010 (Savings)	Fiscal Year 2008-2009 (Savings)	Fiscal Year 2007-2008 (Savings)	Fiscal Year 2006-2007 (Savings)	Total (Savings)	
Assistant Principal II Sr	Student Intervention Services	General	Discretionary	N/A	A	A	12 Month	0.20	October 13, 2010	\$ 17,388	\$ 17,388	\$ 12,420	\$ -	\$ -	\$ -	\$ -	\$ 47,196	
Assistant Principal II Sr	Student Intervention Services	General	Discretionary	N/A	A	A	12 Month	0.20	February 7, 2011	17,388	17,388	7,176	-	-	-	-	41,952	
District Level Clerk	Human Resources	General	Discretionary	N/A	A	N	12 Month	1.00	July 1, 2010	35,008	35,008	35,008	-	-	-	-	105,024	
Site-Based Technician	Maintenance Support Services	General	Discretionary	N/A	A	N	12 Month	1.00	July 1, 2010	44,436	44,436	44,436	-	-	-	-	133,308	
Site-Based Technician	Maintenance Support Services	General	Discretionary	N/A	A	N	12 Month	1.00	October 13, 2010	42,447	42,447	30,081	-	-	-	-	114,975	
Site-Based Technician	Maintenance Support Services	General	Discretionary	N/A	A	N	12 Month	1.00	October 13, 2010	55,894	55,894	39,610	-	-	-	-	151,398	
Site-Based Technician	Maintenance Support Services	General	Discretionary	N/A	A	N	12 Month	1.00	October 13, 2010	56,563	56,563	40,084	-	-	-	-	153,210	
Site-Based Technician	Maintenance Support Services	General	Discretionary	N/A	A	N	12 Month	1.00	October 13, 2010	49,044	49,044	34,756	-	-	-	-	132,844	
Site-Based Technician	Maintenance Support Services	General	Discretionary	N/A	A	N	12 Month	1.00	October 13, 2010	38,500	38,500	27,283	-	-	-	-	104,283	
Site-Based Technician	Maintenance Support Services	General	Discretionary	N/A	A	N	12 Month	1.00	October 13, 2010	46,422	46,422	32,897	-	-	-	-	125,741	
Site-Based Technician	Maintenance Support Services	General	Discretionary	N/A	A	N	12 Month	1.00	October 13, 2010	54,574	54,574	38,674	-	-	-	-	147,822	
Site-Based Technician	Maintenance Support Services	General	Discretionary	N/A	A	N	12 Month	1.00	October 13, 2010	55,587	55,587	39,392	-	-	-	-	150,566	
Site-Based Technician	Maintenance Support Services	General	Discretionary	N/A	A	N	12 Month	1.00	October 13, 2010	55,894	55,894	39,610	-	-	-	-	151,398	
Site-Based Technician	Maintenance Support Services	General	Discretionary	N/A	A	N	12 Month	1.00	October 13, 2010	54,574	54,574	38,674	-	-	-	-	147,822	
Site-Based Technician	Maintenance Support Services	General	Discretionary	N/A	A	N	12 Month	1.00	October 13, 2010	54,574	54,574	38,674	-	-	-	-	147,822	
Site-Based Technician	Maintenance Support Services	General	Discretionary	N/A	A	N	12 Month	1.00	October 13, 2010	54,574	54,574	38,674	-	-	-	-	147,822	
Site-Based Technician	Maintenance Support Services	General	Discretionary	N/A	A	N	12 Month	1.00	October 13, 2010	54,574	54,574	38,674	-	-	-	-	147,822	
Site-Based Technician	Maintenance Support Services	General	Discretionary	N/A	A	N	12 Month	1.00	October 13, 2010	40,974	40,974	29,037	-	-	-	-	110,985	
Supervisor	Print Shop/Bay Area Office	General	Discretionary	N/A	A	M	12 Month	0.20	July 1, 2010	15,144	15,144	15,144	-	-	-	-	45,432	
Warehouse-Grounds Personnel	Carver Hill Administrative Complex	General	Discretionary	N/A	A	N	12 Month	1.00	July 1, 2010	56,468	56,468	56,468	-	-	-	-	169,404	
Subtotal General Fund - Discretionary										17.60	900,027	900,027	676,772	-	-	-	-	2,476,826
School Psychologist	Student Intervention Services - ESE	General	School Psychologists	2027	A	I	10 Month	1.00	January 24, 2011	49,681	49,681	21,038	-	-	-	-	120,400	
Subtotal Other General Fund Projects										1.00	49,681	49,681	21,038	-	-	-	-	120,400
Literacy Coach	Staff Development	Special Revenue	Title II - Part A	1405	A	I	12 Month	1.00	July 1, 2010	83,657	83,657	83,657	-	-	-	-	250,971	
Literacy Coach	Staff Development	Special Revenue	Title II - Part A	1405	A	I	10 Month	0.50	August 2, 2010	43,863	43,863	43,863	-	-	-	-	131,589	
Specialist	Curriculum, Instruction, & Assessment	Special Revenue	Title I	1401	A	A	12 Month	1.00	September 28, 2010	74,176	74,176	55,778	-	-	-	-	204,130	
Staffing Specialist	Student Intervention Services - ESE	Special Revenue	IDEA - Part B	1475	A	I	12 Month	0.35	July 1, 2010	30,664	30,664	30,664	-	-	-	-	91,992	
Teacher on Special Assignment	Curriculum, Instruction, & Assessment	Special Revenue	Title I	1401	A	I	12 Month	0.10	October 1, 2010	4,515	4,515	3,342	-	-	-	-	12,372	
Subtotal Other Special Revenue Projects										2.95	236,875	236,875	217,304	-	-	-	-	691,054
Total Positions Added in Reorganization										21.55	1,186,583	1,186,583	915,114	-	-	-	-	3,288,280
Total Fiscal Year 2010-2011 Net (Savings) Costs										(6.62)	\$ (441,672)	\$ (441,672)	\$ (379,506)	\$ -	\$ -	\$ -	\$ -	\$ (1,262,850)

Legend:
A Administrative Position P Professional/Technical Position
M Managerial Position N Educational Support Position
I Instructional Position C Non-Bargaining Position

School District of Okaloosa County
 District Level Downsizing
 Fiscal Year 2009-2010 Action
 Revised May 17, 2012

Position Type	Department Name	Fund	Project Name	Project Number	Position Added (A) / Deleted (D)	Position Code	Number of Months	Position	Effective Date	Fiscal Year 2012-2013 (Savings)	Fiscal Year 2011-2012 (Savings)	Fiscal Year 2010-2011 (Savings)	Fiscal Year 2009-2010 (Savings)	Fiscal Year 2008-2009 (Savings)	Fiscal Year 2007-2008 (Savings)	Fiscal Year 2006-2007 (Savings)	Total (Savings)	
Air Conditioning & Refrigeration	Maintenance Support Services	General	Discretionary	N/A	D	N	12 Month	(1.00)	August 3, 2009	\$ (51,163)	\$ (51,163)	\$ (51,163)	\$ (46,493)	\$ -	\$ -	\$ -	\$ (199,982)	
Budget Analyst	Budgeting & Financial Services	General	Discretionary	N/A	D	P	12 Month	(1.00)	July 1, 2009	(85,056)	(85,056)	(85,056)	(85,056)	-	-	-	(340,224)	
Carpenter I	Maintenance Support Services	General	Discretionary	N/A	D	N	12 Month	(1.00)	July 1, 2009	(55,038)	(55,038)	(55,038)	(55,038)	-	-	-	(220,152)	
Confidential District Secretary	Information Systems	General	Discretionary	N/A	D	C	12 Month	(1.00)	July 1, 2009	(46,014)	(46,014)	(46,014)	(46,014)	-	-	-	(184,056)	
Custodian II	Maintenance Support Services	General	Discretionary	N/A	D	N	10 Month	(1.00)	July 1, 2009	(38,209)	(38,209)	(38,209)	(38,209)	-	-	-	(152,836)	
Data Systems Technician	Information Systems	General	Discretionary	N/A	D	N	12 Month	(1.00)	July 1, 2009	(75,962)	(75,962)	(75,962)	(75,962)	-	-	-	(303,848)	
District Level Clerk	Human Resources	General	Discretionary	N/A	D	N	12 Month	(0.60)	July 1, 2009	(21,383)	(21,383)	(21,383)	(21,383)	-	-	-	(85,532)	
District Level Clerk	Information Systems	General	Discretionary	N/A	D	N	12 Month	(0.80)	July 1, 2009	(29,771)	(29,771)	(29,771)	(29,771)	-	-	-	(119,084)	
District Level Secretary	Human Resources	General	Discretionary	N/A	D	N	12 Month	(0.17)	April 30, 2010	(7,554)	(7,554)	(7,554)	(7,554)	-	-	-	(30,216)	
District Level Secretary	Curriculum, Instruction & Assessment	General	Discretionary	N/A	D	N	12 Month	(0.50)	July 1, 2009	(27,518)	(27,518)	(27,518)	(27,518)	-	-	-	(110,072)	
District Level Secretary	Information Systems	General	Discretionary	N/A	D	N	12 Month	(0.53)	September 28, 2009	(16,543)	(16,543)	(16,543)	(12,407)	-	-	-	(62,036)	
District Level Secretary	Maintenance Support Services	General	Discretionary	N/A	D	N	12 Month	(1.00)	July 1, 2009	(52,979)	(52,979)	(52,979)	(52,979)	-	-	-	(211,916)	
Electrician I	Maintenance Support Services	General	Discretionary	N/A	D	N	12 Month	(1.00)	July 1, 2009	(55,038)	(55,038)	(55,038)	(55,038)	-	-	-	(220,152)	
Social Worker	Student Intervention Services - ESE	General	Discretionary	N/A	D	I	10 Month	(1.00)	July 1, 2009	(54,576)	(54,576)	(54,576)	(54,576)	-	-	-	(218,304)	
Social Worker	Student Intervention Services - ESE	General	Discretionary	N/A	D	I	10 Month	(0.13)	August 17, 2009	(10,352)	(10,352)	(10,352)	(10,352)	-	-	-	(41,408)	
Specialist - Construction Tech.	CHOICE	General	Discretionary	N/A	D	A	12 Month	(1.00)	July 1, 2009	(95,463)	(95,463)	(95,463)	(95,463)	-	-	-	(381,852)	
Specialist	Curriculum, Instruction & Assessment	General	Discretionary	N/A	D	A	12 Month	(0.20)	July 1, 2009	(11,241)	(11,241)	(11,241)	(11,241)	-	-	-	(44,964)	
Supervisor - Safety	Maintenance Support Services	General	Discretionary	N/A	D	M	12 Month	(0.92)	July 31, 2009	(86,854)	(86,854)	(86,854)	(86,854)	-	-	-	(347,416)	
Teacher, Technology Trainer	Instructional Technology	General	Discretionary	N/A	D	I	12 Month	(0.20)	July 1, 2009	(15,429)	(15,429)	(15,429)	(15,429)	-	-	-	(61,716)	
Welder I - 12 Month	Maintenance Support Services	General	Discretionary	N/A	D	N	12 Month	(1.00)	August 3, 2009	(56,675)	(56,675)	(56,675)	(51,502)	-	-	-	(221,527)	
Welder I - 12 Month	Maintenance Support Services	General	Discretionary	N/A	D	N	12 Month	(1.00)	May 20, 2010	(49,144)	(49,144)	(49,144)	(5,850)	-	-	-	(153,282)	
Subtotal General Fund - Discretionary										(16.05)	(941,962)	(941,962)	(941,962)	(884,689)	-	-	-	(3,710,575)
District Level Secretary	Curriculum, Instruction & Assessment	General	SAI - Closing the Gap	7119	D	N	10 Month	(0.32)	August 13, 2009	(12,148)	(12,148)	(12,148)	(12,148)	-	-	-	(48,592)	
District Level Secretary	Human Resources	General	Fingerprinting	6005	D	N	12 Month	(1.00)	July 1, 2009	(50,934)	(50,934)	(50,934)	(50,934)	-	-	-	(203,736)	
District Level Secretary	Human Resources	General	Fingerprinting	6005	D	N	12 Month	(1.00)	July 1, 2009	(44,434)	(44,434)	(44,434)	(44,434)	-	-	-	(177,736)	
School Psychologist	Student Intervention Services - ESE	General	School Psychologists	2027	D	I	10 Month	(0.40)	August 17, 2009	(21,448)	(21,448)	(21,448)	(21,448)	-	-	-	(85,792)	
Staffing Specialist	Student Intervention Services - ESE	General	Itinerant - Staffing	5012	D	I	10 Month	(0.20)	July 1, 2009	(13,736)	(13,736)	(13,736)	(13,736)	-	-	-	(54,944)	
Student Service Worker	Student Intervention Services	General	SAI - Att. Officers	3162	D	N	10 Month	(1.00)	July 1, 2009	(66,409)	(66,409)	(66,409)	(66,409)	-	-	-	(265,636)	
Subtotal Other General Fund Projects										(3.92)	(209,109)	(209,109)	(209,109)	(209,109)	-	-	-	(836,436)
School Level Clerk	Curriculum, Instruction & Assessment	Special Revenue	Homeless Grant	0412	D	N	10 Month	(0.20)	July 1, 2009	(5,589)	(5,589)	(5,589)	(5,589)	-	-	-	(22,356)	
School Level Clerk	Curriculum, Instruction & Assessment	Special Revenue	Title I	1401	D	N	10 Month	(0.20)	August 10, 2009	(5,147)	(5,147)	(5,147)	(5,147)	-	-	-	(20,588)	
School Level Clerk	Student Intervention Services - ESE	Special Revenue	IDEA - Part B - Pre-K	1476	D	N	10 Month	(0.20)	August 10, 2009	(5,147)	(5,147)	(5,147)	(5,147)	-	-	-	(20,588)	
Specialist	Curriculum, Instruction & Assessment	Special Revenue	Title I	0401	D	A	12 Month	(0.50)	July 1, 2009	(42,303)	(42,303)	(42,303)	(42,303)	-	-	-	(169,212)	
Specialist	Curriculum, Instruction & Assessment	Special Revenue	Homeless Grant	0412	D	A	12 Month	(0.20)	July 1, 2009	(20,150)	(20,150)	(20,150)	(20,150)	-	-	-	(80,600)	
Specialist	Staff Development	Special Revenue	Title II	0405	D	A	12 Month	(1.00)	July 1, 2009	(75,830)	(75,830)	(75,830)	(75,830)	-	-	-	(303,320)	
Staffing Specialist	Student Intervention Services - ESE	Special Revenue	IDEA	0475	D	I	10 Month	(1.79)	July 1, 2009	(148,110)	(148,110)	(148,110)	(148,110)	-	-	-	(592,440)	
Subtotal Other Special Revenue Projects										(4.09)	(302,276)	(302,276)	(302,276)	(302,276)	-	-	-	(1,209,104)
Director	Budgeting & Financial Services	General	Discretionary	N/A	N/A	A	12 Month	N/A	July 1, 2009	-	-	-	(123,519)	-	-	-	(123,519)	
Director	CHOICE	General	Discretionary	N/A	N/A	A	12 Month	N/A	July 1, 2009	-	-	-	(110,987)	-	-	-	(110,987)	
Director	Curriculum, Instruction & Assessment	General	Discretionary	N/A	N/A	A	12 Month	N/A	July 1, 2009	-	-	-	(127,397)	-	-	-	(127,397)	
District Level Secretary	Human Resources	General	Discretionary	N/A	N/A	N	12 Month	N/A	July 1, 2009	-	-	-	(41,389)	-	-	-	(41,389)	
Subtotal Positions to be Held Vacant for Fiscal Year 2009-2010										-	-	-	(403,292)	-	-	-	(403,292)	
Total Positions Deleted in Reorganization										(24.06)	(1,453,347)	(1,453,347)	(1,453,347)	(1,799,366)	-	-	-	(6,159,407)
Subtotal Contracts										-	-	-	-	-	-	-	-	
Total Savings Fiscal Year 2009-2010										(24.06)	\$ (1,453,347)	\$ (1,453,347)	\$ (1,453,347)	\$ (1,799,366)	\$ -	\$ -	\$ -	\$ (6,159,407)

School District of Okaloosa County
District Level Downsizing
Fiscal Year 2009-2010 Action
Revised May 17, 2012

Position Type	Department Name	Fund	Project Name	Project Number	Position Added (A) / Deleted (D)	Position Code	Number of Months	Position	Effective Date	Fiscal Year 2012-2013 (Savings)	Fiscal Year 2011-2012 (Savings)	Fiscal Year 2010-2011 (Savings)	Fiscal Year 2009-2010 (Savings)	Fiscal Year 2008-2009 (Savings)	Fiscal Year 2007-2008 (Savings)	Fiscal Year 2006-2007 (Savings)	Total (Savings)
Accountant	Budgeting & Financial Services	General	Discretionary	N/A	A	N	12 Month	1.00	July 1, 2009	\$ 53,938	\$ 53,938	\$ 53,938	\$ 53,938	\$ -	\$ -	\$ -	\$ 215,752
Carpenter	Maintenance Support Services	General	Discretionary	N/A	A	N	12 Month	1.00	July 1, 2009	55,038	55,038	55,038	55,038	-	-	-	220,152
District Level Clerk	Maintenance Support Services	General	Discretionary	N/A	A	N	12 Month	1.00	July 1, 2009	31,434	31,434	31,434	31,434	-	-	-	125,736
District Level Secretary	Human Resources	General	Discretionary	N/A	A	N	12 Month	1.00	July 1, 2009	50,934	50,934	50,934	50,934	-	-	-	203,736
District Level Secretary	Human Resources	General	Discretionary	N/A	A	N	12 Month	1.00	July 1, 2009	32,785	32,785	32,785	32,785	-	-	-	131,140
District Level Secretary	Information Systems	General	Discretionary	N/A	A	N	12 Month	1.00	July 1, 2009	37,363	37,363	37,363	37,363	-	-	-	149,452
District Level Secretary	Information Systems	General	Discretionary	N/A	A	N	10 Month	0.53	September 28, 2009	25,216	25,216	25,216	20,932	-	-	-	96,580
Electrician I	Maintenance Support Services	General	Discretionary	N/A	A	N	12 Month	1.00	July 1, 2009	55,038	55,038	55,038	55,038	-	-	-	220,152
Foreman	Maintenance Support Services	General	Discretionary	N/A	A	M	12 Month	1.00	September 9, 2009	51,162	51,162	51,162	51,162	-	-	-	204,648
Heavy Equipment Operator	Maintenance Support Services	General	Discretionary	N/A	A	N	12 Month	1.00	May 20, 2010	38,536	38,536	38,536	4,588	-	-	-	120,196
Instructional T.V. Broadcast Tech.	Information Systems	General	Discretionary	N/A	A	P	12 Month	1.00	July 1, 2009	76,540	76,540	76,540	76,540	-	-	-	306,160
Plumber I	Maintenance Support Services	General	Discretionary	N/A	A	N	12 Month	1.00	August 3, 2009	46,400	46,400	46,400	42,165	-	-	-	181,365
Program Director	CHOICE	General	Discretionary	N/A	A	A	12 Month	0.50	July 1, 2009	58,502	58,502	58,502	58,502	-	-	-	234,008
Site-Based Technician	Maintenance Support Services	General	Discretionary	N/A	A	N	12 Month	1.00	August 3, 2009	36,291	36,291	36,291	32,979	-	-	-	141,852
Subtotal General Fund - Discretionary									13.03	649,177	649,177	649,177	603,398	-	-	-	2,550,929
Teacher on Special Assignment	Student Intervention Services	General	SAI - Att. Officers	3162	A	I	10 Month	0.50	July 1, 2009	27,155	27,155	27,155	27,155	-	-	-	108,620
Subtotal Other General Fund Projects									0.50	27,155	27,155	27,155	27,155	-	-	-	108,620
Accountant	Budgeting & Financial Services	Special Revenue	Stabilization - Education - K12	1460	A	N	12 Month	1.00	July 1, 2009	70,701	70,701	70,701	70,701	-	-	-	282,804
Assistant Principal II	Curriculum, Instruction & Assessment	Special Revenue	Title I	0401	A	A	12 Month	0.20	July 1, 2009	20,836	20,836	20,836	20,836	-	-	-	83,344
District Level Secretary	Staff Development	Special Revenue	Title II	0405	A	N	12 Month	0.50	July 1, 2009	27,518	27,518	27,518	27,518	-	-	-	110,072
Literacy Coach	Staff Development	Special Revenue	Title II	0405	A	I	12 Month	1.00	July 1, 2009	84,509	84,509	84,509	84,509	-	-	-	338,036
Program Director	Curriculum, Instruction & Assessment	Special Revenue	Title I	0401	A	A	12 Month	0.50	July 1, 2009	47,365	47,365	47,365	47,365	-	-	-	189,460
Specialist	Curriculum, Instruction & Assessment	Special Revenue	Title I	0401	A	A	12 Month	0.20	July 1, 2009	20,150	20,150	20,150	20,150	-	-	-	80,600
Staffing Specialist	Student Intervention Services - ESE	Special Revenue	IDEA - Part B	1475	A	I	12 Month	0.80	July 1, 2009	70,805	70,805	70,805	70,805	-	-	-	283,220
Staffing Specialist	Student Intervention Services - ESE	Special Revenue	IDEA - PreK	0476	A	I	12 Month	0.25	July 1, 2009	25,355	25,355	25,355	25,355	-	-	-	101,420
Student Service Worker	Student Intervention Services	Special Revenue	IDEA - ARRA	0495	A	N	10 Month	1.00	July 1, 2009	66,409	66,409	66,409	66,409	-	-	-	265,636
Subtotal Other Special Revenue Projects									5.45	433,648	433,648	433,648	433,648	-	-	-	1,734,592
Total Positions Added in Reorganization									18.98	\$ 1,109,980	\$ 1,109,980	\$ 1,109,980	\$ 1,064,201	\$ -	\$ -	\$ -	\$ 4,394,141
Total Fiscal Year 2009-2010 Net (Savings) Costs									(5.08)	\$ (343,367)	\$ (343,367)	\$ (343,367)	\$ (735,165)	\$ -	\$ -	\$ -	\$ (1,765,266)

Legend:
A Administrative Position
M Managerial Position
I Instructional Position
P Professional/Technical Position
N Educational Support Position
C Non-Bargaining Position

School District of Okaloosa County
District Level Downsizing
Fiscal Year 2008-2009 Action
June 30, 2011

Position Type	Department Name	Fund	Project Name	Project Number	Position Added (A) /Deleted (D)	Position Code	Number of Months	Position	Effective Date	Fiscal Year 2012-2013 (Savings)	Fiscal Year 2011-2012 (Savings)	Fiscal Year 2010-2011 (Savings)	Fiscal Year 2009-2010 (Savings)	Fiscal Year 2008-2009 (Savings)	Fiscal Year 2007-2008 (Savings)	Fiscal Year 2006-2007 (Savings)	Total (Savings)	
Bookkeeper	CHOICE	General	Discretionary	N/A	D	N	12 Month	(0.89)	July 1, 2008	\$ (38,851)	\$ (38,851)	\$ (38,851)	\$ (38,851)	\$ (38,851)	\$ -	\$ -	\$ (194,255)	
Carpenter I	Maintenance Support Services	General	Discretionary	N/A	D	N	12 Month	(1.00)	September 22, 2008	(44,434)	(44,434)	(44,434)	(44,434)	(34,031)	-	-	(211,767)	
Carpenter I	Maintenance Support Services	General	Discretionary	N/A	D	N	12 Month	(1.00)	August 21, 2008	(54,009)	(54,009)	(54,009)	(54,009)	(46,079)	-	-	(262,115)	
Chief Officer	Non-Traditional Schools	General	Discretionary	N/A	D	A	12 Month	(0.15)	July 1, 2008	(21,698)	(21,698)	(21,698)	(21,698)	(21,698)	-	-	(108,490)	
Computer Operator I	Information Systems	General	Discretionary	N/A	D	N	12 Month	(1.00)	November 12, 2008	(57,773)	(57,773)	(57,773)	(57,773)	(35,764)	-	-	(266,856)	
Confidential Secretary	Deputy Supt. - Curr., Instr. & Assessment	General	Discretionary	N/A	D	C	12 Month	(1.00)	July 1, 2008	(42,481)	(42,481)	(42,481)	(42,481)	(42,481)	-	-	(212,405)	
Confidential Secretary	Student Intervention Services	General	Discretionary	N/A	D	C	12 Month	(0.17)	July 1, 2008	(9,206)	(9,206)	(9,206)	(9,206)	(9,206)	-	-	(46,030)	
Coordinator - Professional/Technical	Information Systems	General	Discretionary	N/A	D	P	12 Month	(1.00)	December 17, 2008	(100,245)	(100,245)	(100,245)	(100,245)	(53,305)	-	-	(454,285)	
District Level Secretary	Human Resources	General	Discretionary	N/A	D	N	12 Month	(1.00)	July 1, 2008	(33,808)	(33,808)	(33,808)	(33,808)	(33,808)	-	-	(169,040)	
District Level Secretary	Maintenance Support Services	General	Discretionary	N/A	D	N	12 Month	(1.00)	November 30, 2008	(31,245)	(31,245)	(31,245)	(31,245)	(18,226)	-	-	(143,206)	
District Level Secretary	Risk Management	General	Discretionary	N/A	D	N	10 Month	(0.40)	July 1, 2008	(11,013)	(11,013)	(11,013)	(11,013)	(11,013)	-	-	(55,065)	
District Level Secretary	Risk Management	General	Discretionary	N/A	D	N	12 Month	(0.60)	July 1, 2008	(33,355)	(33,355)	(33,355)	(33,355)	(33,355)	-	-	(166,775)	
Director	CHOICE	General	Discretionary	N/A	D	A	12 Month	(0.95)	July 1, 2008	(102,612)	(102,612)	(102,612)	(102,612)	(102,612)	-	-	(513,060)	
Director	Curriculum, Instruction & Assessment	General	Discretionary	N/A	D	A	12 Month	(0.90)	July 1, 2008	(114,235)	(114,235)	(114,235)	(114,235)	(114,235)	-	-	(571,175)	
Director	Information Systems	General	Discretionary	N/A	D	A	12 Month	(1.00)	April 13, 2009	(124,811)	(124,811)	(124,811)	(124,811)	(28,231)	-	-	(527,475)	
Electrician I	Maintenance Support Services	General	Discretionary	N/A	D	N	12 Month	(1.00)	July 1, 2008	(53,874)	(53,874)	(53,874)	(53,874)	(53,874)	-	-	(269,370)	
Foreman, Warehouse	Maintenance Support Services	General	Discretionary	N/A	D	M	12 Month	(1.00)	August 31, 2008	(61,511)	(61,511)	(61,511)	(61,511)	(51,015)	-	-	(297,059)	
Plumber I	Maintenance Support Services	General	Discretionary	N/A	D	N	12 Month	(1.00)	July 31, 2008	(49,565)	(49,565)	(49,565)	(49,565)	(45,238)	-	-	(243,498)	
Specialist	CHOICE	General	Discretionary	N/A	D	A	12 Month	(0.50)	August 1, 2008	(42,992)	(42,992)	(42,992)	(42,992)	(39,068)	-	-	(211,036)	
Specialist - Construction	CHOICE	General	Discretionary	N/A	D	A	12 Month	(0.95)	July 1, 2008	(89,295)	(89,295)	(89,295)	(89,295)	(89,295)	-	-	(446,475)	
Specialist - Instr. Technology	CHOICE	General	Discretionary	N/A	D	A	12 Month	(0.95)	July 1, 2008	(86,422)	(86,422)	(86,422)	(86,422)	(86,422)	-	-	(432,110)	
Specialist	Student Intervention Services	General	Discretionary	N/A	D	A	12 Month	(0.50)	March 16, 2009	(42,303)	(42,303)	(42,303)	(42,303)	(12,926)	-	-	(182,138)	
Teacher, Technology Trainer	Instructional Technology	General	Discretionary	N/A	D	I	12 Month	(1.00)	July 1, 2008	(86,222)	(86,222)	(86,222)	(86,222)	(86,222)	-	-	(431,110)	
Subtotal General Fund - Discretionary										(18,96)	(1,331,960)	(1,331,960)	(1,331,960)	(1,331,960)	(1,086,955)	-	-	(6,414,795)
School Psychologist	Student Intervention Services - ESE	General	School Psych.	2027	D	I	12 Month	(1.00)	August 14, 2008	(103,934)	(103,934)	(103,934)	(103,934)	(90,736)	-	-	(506,472)	
School Secretary	Curriculum, Instruction & Assessment	General	SAI - Closing Gap	7119	D	N	10 Month	(0.40)	August 5, 2008	(2,885)	(2,885)	(2,885)	(2,885)	(2,599)	-	-	(14,139)	
Staffing Specialist	Student Intervention Services - ESE	General	Itinerant - Staffing	5012	D	I	10 Month	(0.10)	December 17, 2008	(5,317)	(5,317)	(5,317)	(5,317)	(2,827)	-	-	(24,095)	
Teacher on Special Assignment	Student Intervention Services	General	SAI - Att. Officers	3162	D	I	10 Month	(1.00)	August 20, 2008	(81,551)	(81,551)	(81,551)	(81,551)	(78,638)	-	-	(404,842)	
Subtotal Other General Fund Projects										(2,50)	(193,687)	(193,687)	(193,687)	(193,687)	(174,800)	-	-	(949,548)
Chief Officer	CHOICE	Special Revenue	Banner	7442	D	A	12 Month	(0.85)	July 1, 2008	(122,955)	(122,955)	(122,955)	(122,955)	(122,955)	-	-	(614,775)	
District Level Secretary	Staff Development	Special Revenue	Title II	9405	D	N	12 Month	(0.50)	August 14, 2008	(19,651)	(19,651)	(19,651)	(19,651)	(17,156)	-	-	(95,760)	
District Level Secretary	Curriculum, Instruction & Assessment	Special Revenue	Title I	9401	D	N	12 Month	(0.50)	August 14, 2008	(19,651)	(19,651)	(19,651)	(19,651)	(17,156)	-	-	(95,760)	
Specialist	Curriculum, Instruction & Assessment	Special Revenue	Title I	9401	D	A	12 Month	(0.56)	February 23, 2009	(48,515)	(48,515)	(48,515)	(48,515)	(17,712)	-	-	(211,772)	
Specialist	Curriculum, Instruction & Assessment	Special Revenue	Title I	9401	D	A	12 Month	(0.20)	July 1, 2008	(15,183)	(15,183)	(15,183)	(15,183)	(15,183)	-	-	(75,915)	
Subtotal Other Special Revenue Projects										(2,61)	(225,955)	(225,955)	(225,955)	(225,955)	(190,162)	-	-	(1,093,982)
Total Positions Deleted in Reorganization										(24,07)	(1,751,602)	(1,751,602)	(1,751,602)	(1,751,602)	(1,451,917)	-	-	(8,458,325)
Subtotal Contracts										-	-	-	-	-	-	-	-	-
Total Savings Fiscal Year 2008-2009										(24,07)	\$(1,751,602)	\$(1,751,602)	\$(1,751,602)	\$(1,751,602)	\$(1,451,917)	\$ -	\$ -	\$(8,458,325)

School District of Okaloosa County
District Level Downsizing
Fiscal Year 2008-2009 Action
June 30, 2011

Position Type	Department Name	Fund	Project Name	Project Number	Position Added (A) /Deleted (D)	Position Code	Number of Months	Position	Effective Date	Fiscal Year 2012-2013 (Savings)	Fiscal Year 2011-2012 (Savings)	Fiscal Year 2010-2011 (Savings)	Fiscal Year 2009-2010 (Savings)	Fiscal Year 2008-2009 (Savings)	Fiscal Year 2007-2008 (Savings)	Fiscal Year 2006-2007 (Savings)	Total (Savings)
Bookkeeper	CHOICE	General	Discretionary	N/A	A	N	12 Month	1.00	July 1, 2008	\$ 43,260	\$ 43,260	\$ 43,260	\$ 43,260	\$ 43,260	\$ -	\$ -	\$ 216,300
Computer Operator II	Information Systems	General	Discretionary	N/A	A	N	12 Month	1.00	November 12, 2008	32,633	32,633	32,633	32,633	20,201	-	-	150,733
Director	Curriculum, Instruction & Assessment	General	Discretionary	N/A	A	A	12 Month	1.00	July 1, 2008	126,928	126,928	126,928	126,928	126,928	-	-	634,640
Director	CHOICE	General	Discretionary	N/A	A	A	12 Month	1.00	July 1, 2008	108,012	108,012	108,012	108,012	108,012	-	-	540,060
District Level Clerk	Human Resources	General	Discretionary	N/A	A	N	12 Month	0.60	February 25, 2009	21,383	21,383	21,383	21,383	7,637	-	-	93,169
District Level Custodian	Niceville Adm. Complex	General	Discretionary	N/A	A	N	12 Month	0.14	October 27, 2008	3,554	3,554	3,554	3,554	2,369	-	-	16,585
Electrician I	Maintenance Support Services	General	Discretionary	N/A	A	N	12 Month	1.00	September 22, 2008	55,038	55,038	55,038	55,038	42,152	-	-	262,304
Office Manager	Deputy Supt. - Curr., Instr. & Assess.	General	Discretionary	N/A	A	P	12 Month	1.00	July 1, 2008	52,218	52,218	52,218	52,218	52,218	-	-	261,090
Program Director	Information Systems	General	Discretionary	N/A	A	A	12 Month	1.00	October 27, 2008	87,305	87,305	87,305	87,305	58,203	-	-	407,423
Programmer	Information Systems	General	Discretionary	N/A	A	P	12 Month	1.00	October 30, 2008	60,762	60,762	60,762	60,762	39,785	-	-	282,833
Site Based Technician	Maintenance Support Services	General	Discretionary	N/A	A	N	12 Month	1.00	August 21, 2008	44,434	44,434	44,434	44,434	37,910	-	-	215,646
Specialist	Information Systems	General	Discretionary	N/A	A	A	12 Month	0.20	July 1, 2008	15,183	15,183	15,183	15,183	15,183	-	-	75,915
Specialist - Construction	CHOICE	General	Discretionary	N/A	A	A	12 Month	1.00	July 1, 2008	93,016	93,016	93,016	93,016	93,016	-	-	465,080
Specialist - Instr. Technology	CHOICE	General	Discretionary	N/A	A	A	12 Month	1.00	July 1, 2008	90,971	90,971	90,971	90,971	90,971	-	-	454,855
Teacher, Technology Trainer	Instructional Technology	General	Discretionary	N/A	A	I	12 Month	0.48	July 1, 2008	36,077	36,077	36,077	36,077	36,077	-	-	180,385
Teacher, Technology Trainer	Instructional Technology	General	Discretionary	N/A	A	I	12 Month	0.52	July 1, 2008	40,118	40,118	40,118	40,118	40,118	-	-	200,590
Subtotal General Fund - Discretionary									12.94	910,892	910,892	910,892	910,892	814,040	-	-	4,457,608
District Level Clerk	Print Shop	General	Print Shop	9121	A	N	12 Month	0.53	September 8, 2008	18,363	18,363	18,363	18,363	11,368	-	-	84,820
Teacher on Special Assignment	Student Intervention Services	General	SAI - Att. Officers	3162	A	I	10 Month	0.50	August 20, 2008	27,155	27,155	27,155	27,155	26,185	-	-	134,805
Subtotal Other General Fund Projects									1.03	45,518	45,518	45,518	45,518	37,553	-	-	219,625
Confidential Secretary	Student Intervention Services	Special Revenue	IDEA	9475	A	N	12 Month	0.17	July 1, 2008	9,206	9,206	9,206	9,206	-	-	-	36,824
Specialist	Curriculum, Instruction & Assessment	Special Revenue	Title I	9401	A	A	12 Month	0.50	March 16, 2009	42,303	42,303	42,303	42,303	12,087	-	-	181,299
Specialist	Curriculum, Instruction & Assessment	Special Revenue	Title I	9401	A	A	12 Month	0.20	October 27, 2008	17,327	17,327	17,327	17,327	11,964	-	-	81,272
Teacher - Title I	Curriculum, Instruction & Assessment	Special Revenue	Title I	9401	A	I	10 Month	0.37	July 31, 2008	25,444	25,444	25,444	25,444	-	-	-	101,776
Subtotal Other Special Revenue Projects									1.24	94,280	94,280	94,280	94,280	24,051	-	-	401,171
Total Positions Added in Reorganization									15.21	\$ 1,050,690	\$ 1,050,690	\$ 1,050,690	\$ 1,050,690	\$ 875,644	\$ -	\$ -	\$ 5,078,404
Total Fiscal Year 2008-2009 Net (Savings) Costs									(8.86)	\$ (700,912)	\$ (700,912)	\$ (700,912)	\$ (700,912)	\$ (576,273)	\$ -	\$ -	\$(3,379,921)

- Legend:**
A Administrative Position
M Managerial Position
I Instructional Position
P Professional/Technical Position
N Educational Support Position
C Non-Bargaining Position

**School District of Okaloosa County
District Level Downsizing
Fiscal Year 2007-2008 Action
June 30, 2011**

Position Type	Department Name	Fund	Project Name	Project Number	Position Added (A) / Deleted (D)	Position Code	Number of Months	Position	Effective Date	Fiscal Year 2012-2013 (Savings)	Fiscal Year 2011-2012 (Savings)	Fiscal Year 2010-2011 (Savings)	Fiscal Year 2009-2010 (Savings)	Fiscal Year 2008-2009 (Savings)	Fiscal Year 2007-2008 (Savings)	Fiscal Year 2006-2007 (Savings)	Total (Savings)
Accountant	Budgeting & Financial Services	General	Discretionary	N/A	D	N	12 Month	(1.00)	November 14, 2007	\$ (76,275)	\$ (76,275)	\$ (76,275)	\$ (76,275)	\$ (76,275)	\$ (46,563)	\$ -	\$ (427,938)
Chief Officer	Chief Officer - Non-Traditional	General	Discretionary	N/A	D	A	12 Month	(0.35)	July 1, 2007	(47,434)	(47,434)	(47,434)	(47,434)	(47,434)	(46,696)	-	(283,866)
Confidential Secretary	Educational Support Services	General	Discretionary	N/A	D	C	12 Month	(1.00)	July 1, 2007	(55,398)	(55,398)	(55,398)	(55,398)	(55,398)	(55,398)	-	(332,388)
Confidential Secretary	Chief Officer - Non-Traditional	General	Discretionary	N/A	D	C	12 Month	(0.50)	July 23, 2007	(29,652)	(29,652)	(29,652)	(29,652)	(29,652)	(29,415)	-	(177,675)
Director - CHOICE	CHOICE	General	Discretionary	N/A	D	A	12 Month	(0.50)	July 1, 2007	(54,007)	(54,007)	(54,007)	(54,007)	(54,007)	(53,263)	-	(323,298)
Director - Curriculum, Instruction & Assess.	Curriculum, Instruction & Assessment	General	Discretionary	N/A	D	A	12 Month	(0.85)	July 1, 2007	(104,339)	(104,339)	(104,339)	(104,339)	(104,339)	(104,119)	-	(625,814)
Director	Staff Development	General	Discretionary	N/A	D	A	12 Month	(1.00)	December 31, 2007	(123,595)	(123,595)	(123,595)	(123,595)	(123,595)	(61,980)	-	(679,955)
District Level Clerk	Human Resources	General	Discretionary	N/A	D	N	12 Month	(1.00)	July 1, 2007	(32,201)	(32,201)	(32,201)	(32,201)	(32,201)	(32,201)	-	(193,206)
District Level Clerk	Information Systems	General	Discretionary	N/A	D	N	12 Month	(1.00)	July 1, 2007	(36,712)	(36,712)	(36,712)	(36,712)	(36,712)	(35,929)	-	(219,489)
District Level Secretary	Accounting Operations	General	Discretionary	N/A	D	N	12 Month	(1.00)	January 31, 2008	(53,874)	(53,874)	(53,874)	(53,874)	(53,874)	(22,226)	-	(291,596)
District Level Secretary	Human Resources	General	Discretionary	N/A	D	N	12 Month	(1.00)	July 1, 2007	(44,631)	(44,631)	(44,631)	(44,631)	(44,631)	(43,771)	-	(266,926)
District Level Secretary	Human Resources	General	Discretionary	N/A	D	N	12 Month	(1.00)	July 1, 2007	(38,365)	(38,365)	(38,365)	(38,365)	(38,365)	(37,566)	-	(229,391)
District Level Secretary	Risk Management	General	Discretionary	N/A	D	N	12 Month	(1.00)	July 1, 2007	(38,365)	(38,365)	(38,365)	(38,365)	(38,365)	(37,566)	-	(229,391)
Evaluation Analyst Confidential	Quality Assurance	General	Discretionary	N/A	D	C	12 Month	(1.00)	July 1, 2007	(41,176)	(41,176)	(41,176)	(41,176)	(41,176)	(41,176)	-	(247,056)
Program Director	Human Resources	General	Discretionary	N/A	D	A	12 Month	(0.53)	July 1, 2007	(62,846)	(62,846)	(62,846)	(62,846)	(62,846)	(62,846)	-	(377,076)
Program Director	Information Systems	General	Discretionary	N/A	D	A	12 Month	(1.00)	July 9, 2007	(114,091)	(114,091)	(114,091)	(114,091)	(114,091)	(113,600)	-	(684,055)
Program Director	Information Systems	General	Discretionary	N/A	D	A	12 Month	(1.00)	November 30, 2007	(113,332)	(113,332)	(113,332)	(113,332)	(113,332)	(64,598)	-	(631,258)
Program Director	Information Systems	General	Discretionary	N/A	D	A	12 Month	(1.00)	November 30, 2007	(113,332)	(113,332)	(113,332)	(113,332)	(113,332)	(64,598)	-	(631,258)
Senior Programmer Analyst	Information Systems	General	Discretionary	N/A	D	C	12 Month	(1.00)	November 30, 2007	(99,544)	(99,544)	(99,544)	(99,544)	(99,544)	(62,561)	-	(560,281)
Senior Programmer Analyst	Information Systems	General	Discretionary	N/A	D	C	12 Month	(1.00)	July 1, 2007	(99,544)	(99,544)	(99,544)	(99,544)	(99,544)	(98,139)	-	(595,859)
Senior Programmer Analyst	Information Systems	General	Discretionary	N/A	D	C	12 Month	(1.00)	November 30, 2007	(93,629)	(93,629)	(93,629)	(93,629)	(93,629)	(54,476)	-	(522,621)
Senior Programmer Analyst	Information Systems	General	Discretionary	N/A	D	C	12 Month	(1.00)	November 30, 2007	(100,969)	(100,969)	(100,969)	(100,969)	(100,969)	(59,347)	-	(564,192)
Senior Programmer Analyst	Information Systems	General	Discretionary	N/A	D	C	12 Month	(1.00)	November 30, 2007	(70,330)	(70,330)	(70,330)	(70,330)	(70,330)	(39,752)	-	(391,402)
Senior Programmer Analyst	Information Systems	General	Discretionary	N/A	D	C	12 Month	(1.00)	November 30, 2007	(80,691)	(80,691)	(80,691)	(80,691)	(80,691)	(37,286)	-	(440,741)
Senior Programmer Analyst	Information Systems	General	Discretionary	N/A	D	C	12 Month	(1.00)	November 30, 2007	(84,861)	(84,861)	(84,861)	(84,861)	(84,861)	(50,860)	-	(475,165)
Senior Programmer Analyst	Information Systems	General	Discretionary	N/A	D	C	12 Month	(1.00)	November 30, 2007	(78,908)	(78,908)	(78,908)	(78,908)	(78,908)	(47,377)	-	(441,917)
Senior Programmer Analyst	Information Systems	General	Discretionary	N/A	D	C	12 Month	(1.00)	November 30, 2007	(80,691)	(80,691)	(80,691)	(80,691)	(80,691)	(48,384)	-	(451,839)
Specialist - Construction Technology	CHOICE	General	Discretionary	N/A	D	A	12 Month	(0.75)	July 1, 2007	(69,753)	(69,753)	(69,753)	(69,753)	(69,753)	(68,758)	-	(417,573)
Specialist - Instr. Technology	CHOICE	General	Discretionary	N/A	D	A	12 Month	(0.75)	July 1, 2007	(68,228)	(68,228)	(68,228)	(68,228)	(68,228)	(67,238)	-	(408,378)
Specialist - Student Intervention Services	Student Intervention Services	General	Discretionary	N/A	D	A	12 Month	(1.00)	December 11, 2007	(103,090)	(103,090)	(103,090)	(103,090)	(103,090)	(56,700)	-	(572,150)
Teacher, Technology Trainer	Instructional Technology	General	Discretionary	N/A	D	I	12 Month	(1.00)	July 1, 2007	(88,443)	(88,443)	(88,443)	(88,443)	(88,443)	(88,443)	-	(530,658)
Subtotal General Fund - Discretionary									(28.23)	(2,298,316)	(2,298,316)	(2,298,316)	(2,298,316)	(2,298,316)	(1,732,832)	-	(13,224,412)
District Level Secretary	Student Intervention Services	General	ESOL	4110	D	N	12 Month	(0.29)	August 5, 2007	(10,586)	(10,586)	(10,586)	(10,586)	(10,586)	(10,586)	-	(63,516)
Chief Officer - Non Traditional Schools	Chief Officer - Non-Traditional	General	Workforce	5110	D	A	12 Month	(0.50)	July 1, 2007	(66,711)	(66,711)	(66,711)	(66,711)	(66,711)	(66,711)	-	(400,266)
Subtotal Other General Fund Projects									(0.79)	(77,297)	(77,297)	(77,297)	(77,297)	(77,297)	(77,297)	-	(463,782)
Director - CHOICE	CHOICE	Special Revenue	Banner	7442	D	A	12 Month	(0.45)	July 1, 2007	-	-	-	-	-	(47,936)	-	(47,936)
Specialist	Student Intervention Services - ESE	Special Revenue	IDEA	8475	D	A	12 Month	(1.00)	January 14, 2008	(107,157)	(107,157)	(107,157)	(107,157)	(107,157)	(49,669)	-	(585,454)
Subtotal Other Special Revenue Projects									(1.45)	(107,157)	(107,157)	(107,157)	(107,157)	(107,157)	(97,605)	-	(633,390)
Total Positions Deleted in Reorganization									(30.47)	(2,482,770)	(2,482,770)	(2,482,770)	(2,482,770)	(2,482,770)	(1,907,734)	-	(14,321,584)
Subtotal Contracts									-	-	-	-	-	-	-	-	-
Total Savings Fiscal Year 2007-2008									(30.47)	\$(2,482,770)	\$(2,482,770)	\$(2,482,770)	\$(2,482,770)	\$(2,482,770)	\$(1,907,734)	\$ -	\$(14,321,584)

**School District of Okaloosa County
District Level Downsizing
Fiscal Year 2007-2008 Action
June 30, 2011**

Position Type	Department Name	Fund	Project Name	Project Number	Position Added (A) / Deleted (D)	Position Code	Number of Months	Position	Effective Date	Fiscal Year 2012-2013 (Savings)	Fiscal Year 2011-2012 (Savings)	Fiscal Year 2010-2011 (Savings)	Fiscal Year 2009-2010 (Savings)	Fiscal Year 2008-2009 (Savings)	Fiscal Year 2007-2008 (Savings)	Fiscal Year 2006-2007 (Savings)	Total (Savings)	
Bookkeeper	CHOICE	General	Discretionary	N/A	A	N	12 Month	0.89	July 1, 2007	\$ 38,851	\$ 38,851	\$ 38,851	\$ 38,851	\$ 38,851	\$ 37,775	\$ -	\$ 232,030	
Budget Analyst	Budgeting & Financial Services	General	Discretionary	N/A	A	P	12 Month	1.00	November 14, 2007	81,683	81,683	81,683	81,683	81,683	50,698	-	459,113	
Coordinator - Administrative	Student Intervention Services	General	Discretionary	N/A	A	P	12 Month	1.00	December 11, 2007	112,045	112,045	112,045	112,045	112,045	60,785	-	621,010	
Coordinator - Operations & Systems Security	Information Systems	General	Discretionary	N/A	A	P	12 Month	1.00	December 3, 2007	114,889	114,889	114,889	114,889	114,889	64,598	-	639,043	
Coordinator - Programming Services	Information Systems	General	Discretionary	N/A	A	P	12 Month	1.00	December 3, 2007	112,843	112,843	112,843	112,843	112,843	63,445	-	627,660	
Coordinator - Systems & E-RATE	Information Systems	General	Discretionary	N/A	A	P	12 Month	1.00	December 3, 2007	97,846	97,846	97,846	97,846	97,846	64,980	-	544,210	
Director - CHOICE	CHOICE	General	Discretionary	N/A	A	A	12 Month	0.95	July 1, 2007	114,889	114,889	114,889	114,889	114,889	64,598	-	639,043	
Director - Curriculum, Instruction & Assess.	Curriculum, Instruction & Assessment	General	Discretionary	N/A	A	A	12 Month	0.90	July 1, 2007	102,612	102,612	102,612	102,612	102,612	101,197	-	614,257	
Director - Facilities	Educational Support Services	General	Discretionary	N/A	A	A	12 Month	1.00	July 1, 2007	110,465	110,465	110,465	110,465	110,465	110,245	-	662,570	
District Level Secretary	Educational Support Services	General	Discretionary	N/A	A	N	12 Month	1.00	July 1, 2007	126,928	126,928	126,928	126,928	126,928	95,478	-	730,118	
District Level Secretary	Human Resources	General	Discretionary	N/A	A	N	12 Month	1.00	July 1, 2007	53,397	53,397	53,397	53,397	53,397	51,358	-	318,343	
District Level Secretary	Information Systems	General	Discretionary	N/A	A	N	12 Month	1.00	July 1, 2007	43,938	43,938	43,938	43,938	43,938	43,462	-	263,152	
District Level Secretary	Risk Management	General	Discretionary	N/A	A	N	10 Month	0.40	October 15, 2007	43,207	43,207	43,207	43,207	43,207	42,359	-	258,394	
FTE Data Technicians	Information Systems	General	Discretionary	N/A	A	P	12 Month	1.00	January 15, 2008	11,013	11,013	11,013	11,013	11,013	9,836	-	64,901	
FTE Data Technicians	Information Systems	General	Discretionary	N/A	A	P	12 Month	1.00	January 15, 2008	43,691	43,691	43,691	43,691	43,691	20,135	-	238,590	
Human Resource Analyst	Human Resources	General	Discretionary	N/A	A	N	12 Month	1.00	July 1, 2007	46,739	46,739	46,739	46,739	46,739	21,554	-	255,249	
Human Resource Analyst	Human Resources	General	Discretionary	N/A	A	N	12 Month	1.00	July 1, 2007	53,133	53,133	53,133	53,133	53,133	52,187	-	317,852	
Coordinator - Information Systems	Information Systems	General	Discretionary	N/A	A	P	12 Month	1.00	July 1, 2007	43,905	43,905	43,905	43,905	43,905	43,905	-	262,575	
Insurance Ombudsman	Risk Management	General	Discretionary	N/A	A	N	12 Month	1.00	July 1, 2007	70,331	70,331	70,331	70,331	70,331	71,296	-	422,951	
Program Analyst	Information Systems	General	Discretionary	N/A	A	C	12 Month	1.00	December 3, 2007	57,647	57,647	57,647	57,647	57,647	56,657	-	344,892	
Program Analyst	Information Systems	General	Discretionary	N/A	A	C	12 Month	1.00	December 3, 2007	86,158	86,158	86,158	86,158	86,158	48,384	-	479,174	
Program Analyst	Information Systems	General	Discretionary	N/A	A	C	12 Month	1.00	December 3, 2007	105,592	105,592	105,592	105,592	105,592	59,347	-	587,257	
Program Analyst	Information Systems	General	Discretionary	N/A	A	C	12 Month	1.00	December 3, 2007	90,544	90,544	90,544	90,544	90,544	50,860	-	503,580	
Program Analyst	Information Systems	General	Discretionary	N/A	A	C	12 Month	1.00	December 3, 2007	70,863	70,863	70,863	70,863	70,863	39,752	-	394,067	
Program Analyst	Information Systems	General	Discretionary	N/A	A	C	12 Month	1.00	December 3, 2007	66,490	66,490	66,490	66,490	66,490	37,286	-	369,736	
Program Analyst	Information Systems	General	Discretionary	N/A	A	C	12 Month	1.00	December 3, 2007	84,378	84,378	84,378	84,378	84,378	47,877	-	469,267	
Program Director	Staff Development	General	Discretionary	N/A	A	A	12 Month	1.00	October 9, 2007	114,091	114,091	114,091	114,091	114,091	83,460	-	653,915	
Site Base Technician	Maintenance Support Services	General	Discretionary	N/A	A	N	12 Month	1.00	July 1, 2007	35,887	35,887	35,887	35,887	35,887	36,415	-	215,850	
Site Base Technician	Maintenance Support Services	General	Discretionary	N/A	A	N	12 Month	1.00	July 1, 2007	46,325	46,325	46,325	46,325	46,325	36,415	-	268,040	
Specialist - CHOICE	CHOICE	General	Discretionary	N/A	A	A	12 Month	1.00	December 11, 2007	103,182	103,182	103,182	103,182	103,182	55,957	-	571,867	
Specialist - Construction Technology	CHOICE	General	Discretionary	N/A	A	A	12 Month	0.96	July 1, 2007	89,295	89,295	89,295	89,295	89,295	88,009	-	534,484	
Specialist - Instr. Technology	CHOICE	General	Discretionary	N/A	A	A	12 Month	0.95	July 1, 2007	86,422	86,422	86,422	86,422	86,422	85,166	-	517,276	
Supervisor	Maintenance Support Services	General	Discretionary	N/A	A	M	12 Month	1.00	July 1, 2007	95,706	95,706	95,706	95,706	95,706	72,341	-	550,871	
Subtotal General Fund - Discretionary										32.05	2,554,975	2,554,975	2,554,975	2,554,975	2,554,975	1,856,462	-	14,631,337
Assistant Principal	District Transfers	General	District Transfers	2031	A	A	12 Month	0.18	July 2, 2007	-	-	-	-	-	-	17,829	-	17,829
Classroom Assistant	District Transfers	General	District Transfers	2031	A	N	9 Month	1.00	January 7, 2008	-	-	-	-	-	-	17,614	-	17,614
Principal	District Transfers	General	District Transfers	2031	A	A	12 Month	1.00	May 23, 2008	-	-	-	-	-	-	7,456	-	7,456
Specialist	District Transfers	General	District Transfers	2031	A	A	12 Month	1.00	May 29, 2008	-	-	-	-	-	-	7,516	-	7,516
Teacher	District Transfers	General	District Transfers	2031	A	I	12 Month	0.42	December 7, 2007	-	-	-	-	-	-	26,913	-	26,913
Staffing Specialist	Student Intervention Services - ESE	General	Staffing Specialist	5012	A	I	12 Month	1.00	October 15, 2007	84,316	84,316	84,316	84,316	84,316	56,481	-	478,061	
Specialist - Closing the Gap	Curriculum, Instruction & Assessment	General	SAI - Closing Gap	7119	A	A	12 Month	1.00	February 11, 2008	103,182	103,182	103,182	103,182	103,182	24,417	-	540,327	
Subtotal Other General Fund Projects										5.60	187,498	187,498	187,498	187,498	187,498	158,226	-	1,095,716
Chief Officer - Non Traditional Schools	Chief Officer - Non-Traditional	Special Revenue	Banner	7442	A	A	12 Month	0.85	July 1, 2007	-	-	-	-	-	121,382	-	121,382	
Specialist - Construction Technology	CHOICE	Special Revenue	Banner	7442	A	A	12 Month	0.04	July 1, 2007	-	-	-	-	-	3,668	-	3,668	
Specialist - Instr. Technology	CHOICE	Special Revenue	Banner	7442	A	A	12 Month	0.05	July 1, 2007	-	-	-	-	-	4,483	-	4,483	
Subtotal Other Special Revenue Projects										0.94	-	-	-	-	-	129,533	-	129,533
Total Positions Added in Reorganization										38.59	\$ 2,742,473	\$ 2,742,473	\$ 2,742,473	\$ 2,742,473	\$ 2,742,473	\$ 2,144,221	\$ -	\$ 15,856,586
Total Fiscal Year 2007-2008 Net (Savings) Costs										8.12	\$ 259,703	\$ 259,703	\$ 259,703	\$ 259,703	\$ 259,703	\$ 236,487	\$ -	\$ 1,535,002

Legend:
A Administrative Position
M Managerial Position
I Instructional Position
P Professional/Technical Position
N Educational Support Position
C Non-Bargaining Position

**School District of Okaloosa County
District Level Downsizing
Fiscal Year 2006-2007 Action
June 30, 2011**

Position Type	Department Name	Fund	Project Name	Project Number	Position Added (A) / Deleted (D)	Position Code	Number of Months	Position	Effective Date	Fiscal Year 2012-2013 (Savings)	Fiscal Year 2011-2012 (Savings)	Fiscal Year 2010-2011 (Savings)	Fiscal Year 2009-2010 (Savings)	Fiscal Year 2008-2009 (Savings)	Fiscal Year 2007-2008 (Savings)	Fiscal Year 2006-2007 (Savings)	Total (Savings)
Assistant Superintendent - Central	Assistant Superintendent - Central	General	Discretionary	N/A	D	A	12 Month	(1.00)	November 7, 2006	\$ (140,835)	\$ (140,835)	\$ (140,835)	\$ (140,835)	\$ (140,835)	\$ (140,835)	\$ (84,999)	\$ (930,009)
Assistant Superintendent - North	Assistant Superintendent - North	General	Discretionary	N/A	D	A	12 Month	(1.00)	January 31, 2007	(138,174)	(138,174)	(138,174)	(138,174)	(138,174)	(138,174)	(83,377)	(912,421)
Assistant Superintendent - South	Assistant Superintendent - South	General	Discretionary	N/A	D	A	12 Month	(1.00)	November 13, 2006	(131,057)	(131,057)	(131,057)	(131,057)	(131,057)	(131,057)	(79,037)	(865,379)
Chief Officer	Educational Support Services	General	Discretionary	N/A	D	A	12 Month	(1.00)	June 15, 2007	(133,691)	(133,691)	(133,691)	(133,691)	(133,691)	(133,691)	(5,104)	(807,250)
Confidential Secretary	Assistant Superintendent - Central	General	Discretionary	N/A	D	C	12 Month	(1.00)	November 7, 2006	(55,398)	(55,398)	(55,398)	(55,398)	(55,398)	(55,398)	(32,896)	(365,284)
District Level Secretary	Community Affairs	General	Discretionary	N/A	D	N	12 Month	(1.00)	May 14, 2007	(36,415)	(36,415)	(36,415)	(36,415)	(36,415)	(36,415)	(4,702)	(223,192)
District Level Secretary	Student Intervention Services - ESE	General	Discretionary	N/A	D	N	12 Month	(1.00)	March 1, 2007	(53,155)	(53,155)	(53,155)	(53,155)	(53,155)	(53,155)	(17,360)	(336,290)
Program Director	Purchasing	General	Discretionary	N/A	D	A	12 Month	(1.00)	June 12, 2007	(114,242)	(114,242)	(114,242)	(114,242)	(114,242)	(114,242)	(6,095)	(691,547)
Program Director	Student Intervention Services - ESE	General	Discretionary	N/A	D	A	12 Month	(1.00)	January 22, 2007	(113,268)	(113,268)	(113,268)	(113,268)	(113,268)	(113,268)	(66,893)	(746,501)
Specialist	Curriculum, Instruction & Assessment	General	Discretionary	N/A	D	A	12 Month	(1.00)	December 12, 2006	(80,325)	(80,325)	(80,325)	(80,325)	(80,325)	(80,325)	(40,237)	(522,187)
Subtotal General Fund - Discretionary										(10.00)							
										(996,560)	(996,560)	(996,560)	(996,560)	(996,560)	(996,560)	(420,700)	(6,400,060)
Teacher on Special Assignment	Student Intervention Services	General	ESOL - SAI	4110	D	I	10 Month	(1.00)	July 1, 2006	(47,080)	(47,080)	(47,080)	(47,080)	(47,080)	(47,080)	(44,729)	(327,209)
Media Production Technician	Curriculum, Instruction & Assessment	General	Media Services	3111	D	N	12 Month	(1.00)	January 1, 2007	(51,357)	(51,357)	(51,357)	(51,357)	(51,357)	(51,357)	(24,847)	(332,989)
District Level Secretary	Staff Development	General	SEPEC	7015	D	N	12 Month	(1.00)	January 8, 2007	(51,357)	(51,357)	(51,357)	(51,357)	(51,357)	(51,357)	(23,884)	(332,026)
District Level Secretary	Student Intervention Services - ESE	General	School Psychologists	2027	D	N	12 Month	(1.00)	January 9, 2007	(51,357)	(51,357)	(51,357)	(51,357)	(51,357)	(51,357)	(22,535)	(330,677)
Subtotal Other General Fund Projects										(4.00)							
										(201,151)	(201,151)	(201,151)	(201,151)	(201,151)	(201,151)	(115,995)	(1,322,901)
Total Positions Deleted in Reorganization										(14.00)							
										(1,197,711)	(1,197,711)	(1,197,711)	(1,197,711)	(1,197,711)	(1,197,711)	(536,695)	(7,722,961)
Okaloosa Public Schools Foundation Contract	Community Affairs	General	Discretionary	N/A	D	N/A	N/A	N/A	January 4, 2007	(80,000)	(80,000)	(80,000)	(80,000)	(80,000)	(80,000)	(80,000)	(560,000)
Subtotal Contracts										-							
										(80,000)	(80,000)	(80,000)	(80,000)	(80,000)	(80,000)	(560,000)	
Total Savings Fiscal Year 2006-2007										(14.00)							
										\$ (1,277,711)	\$ (1,277,711)	\$ (1,277,711)	\$ (1,277,711)	\$ (1,277,711)	\$ (1,277,711)	\$ (616,695)	\$ (8,282,961)
Deputy Superintendent	Deputy Superintendent - Curriculum, Instr., & Assess.	General	Discretionary	N/A	A	A	12 Month	1.00	November 14, 2006	\$ 131,057	\$ 131,057	\$ 131,057	\$ 131,057	\$ 131,057	\$ 131,057	\$ 79,037	\$ 865,379
Deputy Superintendent	Deputy Superintendent - School Operations	General	Discretionary	N/A	A	A	12 Month	1.00	November 14, 2006	136,985	136,985	136,985	136,985	136,985	136,985	82,652	904,562
Director	Student Intervention Services - ESE	General	Discretionary	N/A	A	A	12 Month	1.00	January 22, 2007	119,857	119,857	119,857	119,857	119,857	119,857	45,243	764,385
Director	Purchasing	General	Discretionary	N/A	A	A	12 Month	0.40	June 12, 2007	48,356	48,356	48,356	48,356	48,356	48,356	2,582	292,718
Director	Accounting and Financial Reporting	General	Discretionary	N/A	A	A	12 Month	1.00	May 21, 2007	118,538	118,538	118,538	118,538	118,538	118,538	13,557	724,785
District Level Secretary	Human Resources	General	Discretionary	N/A	A	N	12 Month	1.00	May 14, 2007	36,415	36,415	36,415	36,415	36,415	36,415	4,858	223,348
Subtotal General Fund - Discretionary										5.40							
										591,208	591,208	591,208	591,208	591,208	591,208	227,929	3,775,177
Assistant Principal I	District Transfers	General	District Transfers	2031	A	A	12 Month	1.00	February 1, 2007	36,658	36,658	36,658	36,658	36,658	36,658	44,818	264,766
Assistant Superintendent - North	District Transfers	General	District Transfers	2031	A	A	12 Month	1.00	November 14, 2007	-	-	-	-	-	-	32,718	32,718
District Based Teacher	District Transfers	General	District Transfers	2031	A	I	10 Month	1.00	February 13, 2007	-	-	-	-	-	-	16,150	16,150
Office Manager	District Transfers	General	District Transfers	2031	A	M	12 Month	1.00	December 1, 2006	-	-	-	-	-	-	15,917	15,917
Specialist	Curriculum, Instruction & Assessment	General	SAI	3161	A	A	12 Month	1.00	April 9, 2007	80,325	80,325	80,325	80,325	80,325	80,325	-	481,950
Specialist	Student Intervention Services	General	SAI	3161	A	A	12 Month	1.00	April 9, 2007	80,325	80,325	80,325	80,325	80,325	80,325	-	481,950
Subtotal Other General Fund Projects										6.00							
										197,308	197,308	197,308	197,308	197,308	197,308	109,603	1,293,451
Total Positions Added in Reorganization										11.40							
										788,516	788,516	788,516	788,516	788,516	788,516	337,532	5,068,628
Total Fiscal Year 2006-2007 Net (Savings) Costs										(2.60)							
										\$ (489,195)	\$ (489,195)	\$ (489,195)	\$ (489,195)	\$ (489,195)	\$ (489,195)	\$ (279,163)	\$ (3,214,333)

Legend:
A Administrative Position
M Managerial Position
I Instructional Position
P Professional/Technical Position
N Educational Support Position
C Non-Bargaining Position