

SUMMARY
PAGE 1

**UNDER
CONSTRUCTION**

SUMMARY
PAGE 2

SUMMARY
PAGE 3

SUMMARY
PAGE 4

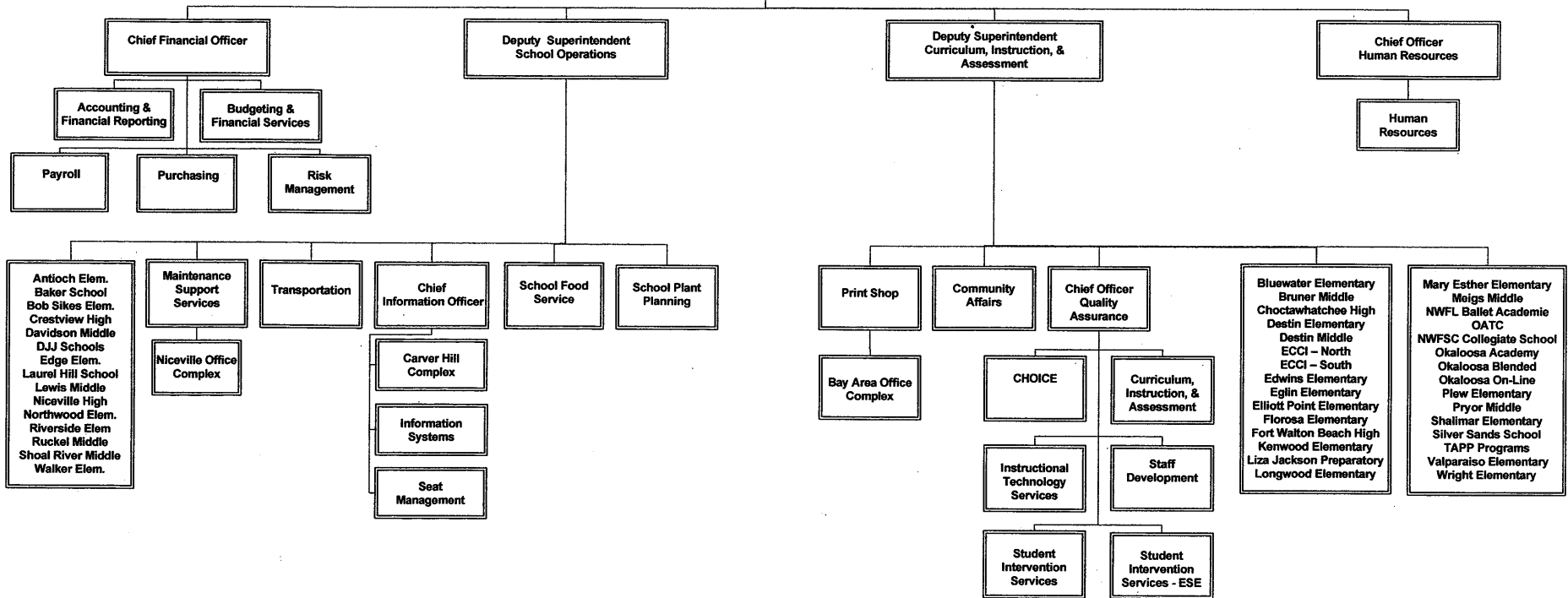
SUMMARY
PAGE 5

School District of Okaloosa County

ORGANIZATIONAL CHART

Fiscal Year 2010-2011

Superintendent



Revised May 20, 2010

School District of Okaloosa County
District Level Downsizing

Revised
9/10/10

Summary
Fiscal Years 2010-2011, 2009-2010, 2008-2009, 2007-2008, and 2006-2007
June 30, 2010

	Fiscal Year 2010-2011 (Savings) Costs	Fiscal Year 2009-2010 (Savings) Costs	Fiscal Year 2008-2009 (Savings) Costs	Fiscal Year 2007-2008 (Savings) Costs	Fiscal Year 2006-2007 (Savings) Costs	Total Combined (Savings) Costs
<u>Fiscal Year 2010-2011 Proposed Action</u>						
<u>Proposed Positions Deleted</u>						
General Fund - Discretionary	\$ (413,844)	\$ -	\$ -	\$ -	\$ -	\$ (413,844)
Other General Fund Projects	(8,916)	-	-	-	-	(8,916)
Other Special Revenue Projects	(214,427)	-	-	-	-	(214,427)
Positions to be Held Vacant for Fiscal Year 2010-2011	-	-	-	-	-	-
Subtotal Positions Deleted	(637,187)	-	-	-	-	(637,187)
<u>Proposed Positions Added</u>						
General Fund - Discretionary	91,476	-	-	-	-	91,476
Other General Fund Projects	203,808	-	-	-	-	203,808
Other Special Revenue Projects	229,917	-	-	-	-	229,917
Subtotal Positions Added	525,201	-	-	-	-	525,201
Total Fiscal Year 2010-2011 Net Proposed (Savings) Costs	(111,986)	-	-	-	-	(111,986)
<u>Fiscal Year 2009-2010 Action</u>						
<u>Proposed Positions Deleted</u>						
General Fund - Discretionary	(941,962)	(884,689)	-	-	-	(1,826,651)
Other General Fund Projects	(884,418)	(884,418)	-	-	-	(1,768,836)
Other Special Revenue Projects	(369,748)	(359,322)	-	-	-	(729,070)
Positions to be Held Vacant for Fiscal Year 2009-2010	-	(403,292)	-	-	-	(403,292)
Subtotal Positions Deleted	(2,196,128)	(2,531,721)	-	-	-	(4,727,849)
<u>Proposed Positions Added</u>						
General Fund - Discretionary	649,177	603,398	-	-	-	1,252,575
Other General Fund Projects	147,211	147,211	-	-	-	294,422
Other Special Revenue Projects	1,210,578	1,210,578	-	-	-	2,421,156
Subtotal Positions Added	2,006,966	1,961,187	-	-	-	3,968,153
Total Fiscal Year 2009-2010 Net Proposed (Savings) Costs	(189,162)	(570,534)	-	-	-	(759,696)
<u>Fiscal Year 2008-2009 Action</u>						
<u>Positions Deleted</u>						
General Fund - Discretionary	(1,331,960)	(1,331,960)	(1,086,955)	-	-	(3,750,875)
Other General Fund Projects	(193,687)	(193,687)	(174,800)	-	-	(562,174)
Other Special Revenue Projects	(225,955)	(225,955)	(190,162)	-	-	(642,072)
Subtotal Positions Deleted	(1,751,602)	(1,751,602)	(1,451,917)	-	-	(4,955,121)
<u>Positions Added</u>						
General Fund - Discretionary	910,892	910,892	814,040	-	-	2,635,824
Other General Fund Projects	45,518	45,518	37,553	-	-	128,589
Other Special Revenue Projects	94,280	94,280	24,051	-	-	212,611
Subtotal Positions Added	1,050,690	1,050,690	875,644	-	-	2,977,024
Total Fiscal Year 2008-2009 Net (Savings) Costs	(700,912)	(700,912)	(576,273)	-	-	(1,978,097)

School District of Okaloosa County
District Level Downsizing

Summary

Fiscal Years 2010-2011, 2009-2010, 2008-2009, 2007-2008, and 2006-2007
June 30, 2010

Revised
9/10/10

	Fiscal Year 2010-2011 (Savings) Costs	Fiscal Year 2009-2010 (Savings) Costs	Fiscal Year 2008-2009 (Savings) Costs	Fiscal Year 2007-2008 (Savings) Costs	Fiscal Year 2006-2007 (Savings) Costs	Total Combined (Savings) Costs
<u>Fiscal Year 2007-2008 Action</u>						
<u>Positions Deleted</u>						
General Fund - Discretionary	(2,298,316)	(2,298,316)	(2,298,316)	(1,732,832)	-	(8,627,780)
Other General Fund Projects	(77,297)	(77,297)	(77,297)	(77,297)	-	(309,188)
Other Special Revenue Projects	(107,157)	(107,157)	(107,157)	(97,605)	-	(419,076)
Subtotal Positions Deleted	(2,482,770)	(2,482,770)	(2,482,770)	(1,907,734)	-	(9,356,044)
<u>Positions Added</u>						
General Fund - Discretionary	2,554,975	2,554,975	2,554,975	1,856,462	-	9,521,387
Other General Fund Projects	187,498	187,498	187,498	158,226	-	720,720
Other Special Revenue Projects	-	-	-	129,533	-	129,533
Subtotal Positions Added	2,742,473	2,742,473	2,742,473	2,144,221	-	10,371,640
Total Fiscal Year 2007-2008 Net (Savings) Costs	259,703	259,703	259,703	236,487	-	1,015,596
<u>Fiscal Year 2006-2007 Action</u>						
<u>Positions and Contracts Deleted</u>						
General Fund - Discretionary	(996,560)	(996,560)	(996,560)	(996,560)	(420,700)	(4,406,940)
Other General Fund Projects	(201,151)	(201,151)	(201,151)	(201,151)	(115,995)	(920,599)
Subtotal Positions Deleted	(1,197,711)	(1,197,711)	(1,197,711)	(1,197,711)	(536,695)	(5,327,539)
Contracts Deleted in Reorganization	-	(80,000)	(80,000)	(80,000)	(80,000)	(320,000)
Subtotal Positions Deleted	(1,197,711)	(1,277,711)	(1,277,711)	(1,277,711)	(616,695)	(5,647,539)
<u>Positions Added</u>						
General Fund - Discretionary	591,208	591,208	591,208	591,208	227,929	2,592,761
Other General Fund Projects	197,308	197,308	197,308	197,308	109,603	898,835
Subtotal Positions Added	788,516	788,516	788,516	788,516	337,532	3,491,596
Total Fiscal Year 2006-2007 Net (Savings) Costs	(409,195)	(489,195)	(489,195)	(489,195)	(279,163)	(2,155,943)
<u>Fiscal Years 2006-2007, 2007-2008, 2008-2009, 2009-2010, & 2010-2011</u>						
Total (Savings) Costs	\$ (1,151,552)	\$ (1,500,938)	\$ (805,765)	\$ (252,708)	\$ (279,163)	\$ (3,990,126)

School District of Okaloosa County
District Level Downsizing
Fiscal Year 2010-2011 Action
June 30, 2010

Position Type	Department Name	Fund	Project Name	Project Number	Position Added (A) /Deleted (D)	Position Code	Number of Months	Position	Effective Date	Fiscal Year 2010-2011 (Savings)	Fiscal Year 2009-2010 (Savings)	Fiscal Year 2008-2009 (Savings)	Fiscal Year 2007-2008 (Savings)	Fiscal Year 2006-2007 (Savings)	Total (Savings)	
Director	CHOICE	General	Discretionary	N/A	N/A	A	12 Month	(1.00)	July 1, 2010	(97,065)	-	-	-	-	(97,065)	
Director	Curriculum, Instruction & Assessment	General	Discretionary	N/A	N/A	A	12 Month	(1.00)	July 1, 2010	(97,065)	-	-	-	-	(97,065)	
District Custodian I	Carver Hill Administrative Complex	General	Discretionary	N/A	D	N	12 Month	(1.00)	July 1, 2010	(56,468)	-	-	-	-	(56,468)	
District Level Clerk	Maintenance Support Services	General	Discretionary	N/A	D	N	12 Month	(0.74)	October 1, 2010	(25,486)	-	-	-	-	(25,486)	
District Level Secretary	Human Resources	General	Discretionary	N/A	D	N	12 Month	(0.83)	July 1, 2010	(40,122)	-	-	-	-	(40,122)	
District Level Secretary	Student Intervention Services	General	Discretionary	N/A	D	N	12 Month	(0.50)	July 1, 2010	(21,708)	-	-	-	-	(21,708)	
District Level Secretary	Student Intervention Services - ESE	General	Discretionary	N/A	D	N	12 Month	(0.50)	July 1, 2010	(21,708)	-	-	-	-	(21,708)	
Human Resource Analyst	Human Resources	General	Discretionary	N/A	D	N	12 Month	(1.00)	July 1, 2010	(45,902)	-	-	-	-	(45,902)	
Supervisor, Safety	Maintenance Support Services	General	Discretionary	N/A	D	M	12 Month	(0.08)	July 1, 2010	(8,320)	-	-	-	-	(8,320)	
Subtotal General Fund - Discretionary										(6.65)	(413,844)	-	-	-	-	(413,844)
Staffing Specialist ESE	Student Intervention Services - ESE	General	Itinerant - Staffing Specialist	5012	D	I	10 Month	(0.10)	August 2, 2010	(8,916)	-	-	-	-	(8,916)	
Subtotal Other General Fund Projects										(0.10)	(8,916)	-	-	-	-	(8,916)
Home/School Liason	Curriculum, Instruction & Assessment	Special Revenue	Title I	1401	D	N	12 Month	(0.20)	August 10, 2010	(12,310)	-	-	-	-	(12,310)	
Homeless Liason	Curriculum, Instruction & Assessment	Special Revenue	Title I	1401	D	A	12 Month	(0.20)	July 1, 2010	(15,896)	-	-	-	-	(15,896)	
Literacy Coach	Staff Development	Special Revenue	Title II - Part A	1405	D	I	10 Month	(1.50)	August 2, 2010	(82,281)	-	-	-	-	(82,281)	
Specialist	Student Intervention Services - ESE	Special Revenue	IDEA - Part B	1475	D	A	12 Month	(0.20)	July 1, 2010	(19,819)	-	-	-	-	(19,819)	
Speech Pathologist	Student Intervention Services - ESE	Special Revenue	IDEA - Part B	1475	D	I	12 Month	(0.80)	July 1, 2010	(84,121)	-	-	-	-	(84,121)	
Subtotal Other Special Revenue Projects										(2.90)	(214,427)	-	-	-	-	(214,427)
Total Positions Deleted in Reorganization										(9.65)	(637,187)	-	-	-	-	(637,187)
Subtotal Contracts										-	-	-	-	-	-	-
Total Savings Fiscal Year 2010-2011										(9.65)	\$ (637,187)	\$ -	\$ -	\$ -	\$ -	\$ (637,187)
District Level Clerk	Human Resources	General	Discretionary	N/A	A	N	12 Month	1.00	July 1, 2010	\$ 35,008	\$ -	\$ -	\$ -	\$ -	\$ 35,008	
Warehouse-Grounds Personnel	Carver Hill Administrative Complex	General	Discretionary	N/A	A	N	12 Month	1.00	July 1, 2010	56,468	-	-	-	-	56,468	
Subtotal General Fund - Discretionary										2.00	91,476	-	-	-	-	91,476
Stadium Personnel	Maintenance Support Services	General	Grounds/Beautification	0010	A	N	12 Month	1.00	July 1, 2010	39,824	-	-	-	-	39,824	
Teacher - Adaptive P.E.	Student Intervention Services - ESE	General	Itinerant - Adaptive PE	2017	A	I	10 Month	1.00	August 2, 2010	87,256	-	-	-	-	87,256	
Teacher - Adaptive P.E.	Student Intervention Services - ESE	General	Itinerant - Adaptive PE	2017	A	I	10 Month	1.00	August 2, 2010	76,728	-	-	-	-	76,728	
Subtotal Other General Fund Projects										3.00	203,808	-	-	-	-	203,808
Literacy Coach	Staff Development	Special Revenue	Title II - Part A	1405	A	I	12 Month	1.00	July 1, 2010	83,657	-	-	-	-	83,657	
Speech Pathologist	Student Intervention Services - ESE	Special Revenue	IDEA - Part B	1475	A	I	10 Month	1.74	August 2, 2010	115,596	-	-	-	-	115,596	
Staffing Specialist	Student Intervention Services - ESE	Special Revenue	IDEA - Part B	1475	A	I	12 Month	0.35	July 1, 2010	30,664	-	-	-	-	30,664	
Subtotal Other Special Revenue Projects										3.09	229,917	-	-	-	-	229,917
Total Positions Added in Reorganization										8.09	525,201	-	-	-	-	525,201
Total Fiscal Year 2010-2011 Net (Savings) Costs										(1.56)	\$ (111,986)	\$ -	\$ -	\$ -	\$ -	\$ (111,986)

Legend:
A Administrative Position **P** Professional/Technical Position
M Managerial Position **N** Educational Support Position
I Instructional Position **C** Non-Bargaining Position

**School District of Okaloosa County
District Level Downsizing
Fiscal Year 2009-2010 Action
Revised June 29, 2010**

Position Type	Department Name	Fund	Project Name	Project Number	Position Added (A) /Deleted (D)	Position Code	Number of Months	Position	Effective Date	Fiscal Year 2010-2011 (Savings)	Fiscal Year 2009-2010 (Savings)	Fiscal Year 2008-2009 (Savings)	Fiscal Year 2007-2008 (Savings)	Fiscal Year 2006-2007 (Savings)	Total (Savings)
Air Conditioning & Refrigeration	Maintenance Support Services	General	Discretionary	N/A	D	N	12 Month	(1.00)	August 3, 2009	\$ (51,163)	\$ (46,493)	\$ -	\$ -	\$ -	\$ (97,656)
Budget Analyst	Budgeting & Financial Services	General	Discretionary	N/A	D	P	12 Month	(1.00)	July 1, 2009	(85,056)	(85,056)	-	-	-	(170,112)
Carpenter I	Maintenance Support Services	General	Discretionary	N/A	D	N	12 Month	(1.00)	July 1, 2009	(55,038)	(55,038)	-	-	-	(110,076)
Confidential District Secretary	Information Systems	General	Discretionary	N/A	D	C	12 Month	(1.00)	July 1, 2009	(46,014)	(46,014)	-	-	-	(92,028)
Custodian II	Maintenance Support Services	General	Discretionary	N/A	D	N	10 Month	(1.00)	July 1, 2009	(38,209)	(38,209)	-	-	-	(76,418)
Data Systems Technician	Information Systems	General	Discretionary	N/A	D	N	12 Month	(1.00)	July 1, 2009	(75,962)	(75,962)	-	-	-	(151,924)
District Level Clerk	Human Resources	General	Discretionary	N/A	D	N	12 Month	(0.60)	July 1, 2009	(21,383)	(21,383)	-	-	-	(42,766)
District Level Clerk	Information Systems	General	Discretionary	N/A	D	N	12 Month	(0.80)	July 1, 2009	(29,771)	(29,771)	-	-	-	(59,542)
District Level Secretary	Human Resources	General	Discretionary	N/A	D	N	12 Month	(0.17)	April 30, 2010	(7,554)	(7,554)	-	-	-	(15,108)
District Level Secretary	Curriculum, Instruction & Assessment	General	Discretionary	N/A	D	N	12 Month	(0.50)	July 1, 2009	(27,518)	(27,518)	-	-	-	(55,036)
District Level Secretary	Information Systems	General	Discretionary	N/A	D	N	12 Month	(0.53)	September 28, 2009	(16,543)	(12,407)	-	-	-	(28,950)
District Level Secretary	Maintenance Support Services	General	Discretionary	N/A	D	N	12 Month	(1.00)	July 1, 2009	(52,979)	(52,979)	-	-	-	(105,958)
Electrician I	Maintenance Support Services	General	Discretionary	N/A	D	N	12 Month	(1.00)	July 1, 2009	(55,038)	(55,038)	-	-	-	(110,076)
Social Worker	Student Intervention Services - ESE	General	Discretionary	N/A	D	I	10 Month	(1.00)	July 1, 2009	(54,576)	(54,576)	-	-	-	(109,152)
Student Worker	Student Intervention Services - ESE	General	Discretionary	N/A	D	I	10 Month	(0.13)	August 17, 2009	(10,352)	(10,352)	-	-	-	(20,704)
Specialist - Construction Technology	CHOICE	General	Discretionary	N/A	D	A	12 Month	(1.00)	July 1, 2009	(95,463)	(95,463)	-	-	-	(190,926)
Specialist	Curriculum, Instruction & Assessment	General	Discretionary	N/A	D	A	12 Month	(0.20)	July 1, 2009	(11,241)	(11,241)	-	-	-	(22,482)
Supervisor - Safety	Maintenance Support Services	General	Discretionary	N/A	D	M	12 Month	(0.92)	July 31, 2009	(86,854)	(86,854)	-	-	-	(173,708)
Teacher, Technology Trainer	Instructional Technology	General	Discretionary	N/A	D	I	12 Month	(0.20)	July 1, 2009	(15,429)	(15,429)	-	-	-	(30,858)
Welder I - 12 Month	Maintenance Support Services	General	Discretionary	N/A	D	N	12 Month	(1.00)	August 3, 2009	(56,675)	(51,502)	-	-	-	(108,177)
Welder I - 12 Month	Maintenance Support Services	General	Discretionary	N/A	D	N	12 Month	(1.00)	May 20, 2010	(49,144)	(5,850)	-	-	-	(54,994)
Subtotal General Fund - Discretionary (16.05)										(941,962)	(884,689)	-	-	-	(1,826,651)
Behavior Analyst	Student Intervention Services - ESE	General	Itinerant - Autistic	2018	D	I	10 Month	(1.00)	July 1, 2009	(59,021)	(59,021)	-	-	-	(118,042)
District Level Secretary	Curriculum, Instruction & Assessment	General	SAI - Closing the Gap	7119	D	N	10 Month	(0.32)	August 13, 2009	(12,148)	(12,148)	-	-	-	(24,296)
District Level Secretary	Human Resources	General	Fingerprinting	6005	D	N	12 Month	(1.00)	July 1, 2009	(50,934)	(50,934)	-	-	-	(101,868)
District Level Secretary	Human Resources	General	Fingerprinting	6005	D	N	12 Month	(1.00)	July 1, 2009	(44,434)	(44,434)	-	-	-	(88,868)
Educational Interpreter - ESE	Student Intervention Services - ESE	General	Itinerant - Hearing	2008	D	N	9 Month	(1.00)	July 1, 2009	(26,792)	(26,792)	-	-	-	(53,584)
Occupational Therapist	Student Intervention Services - ESE	General	Itinerant - OT/PT	2019	D	I	10 Month	(1.00)	July 1, 2009	(50,337)	(50,337)	-	-	-	(100,674)
Occupational Therapist	Student Intervention Services - ESE	General	Itinerant - OT/PT	2019	D	I	10 Month	(1.00)	July 1, 2009	(50,337)	(50,337)	-	-	-	(100,674)
Occupational Therapist	Student Intervention Services - ESE	General	Itinerant - OT/PT	2019	D	I	10 Month	(1.00)	July 1, 2009	(50,337)	(50,337)	-	-	-	(100,674)
Occupational Therapist	Student Intervention Services - ESE	General	Itinerant - OT/PT	2019	D	I	10 Month	(1.00)	July 1, 2009	(82,692)	(82,692)	-	-	-	(165,384)
Occupational Therapist	Student Intervention Services - ESE	General	Itinerant - OT/PT	2019	D	I	10 Month	(1.00)	July 1, 2009	(66,814)	(66,814)	-	-	-	(133,628)
Physical Therapist	Student Intervention Services - ESE	General	Itinerant - OT/PT	2019	D	I	10 Month	(1.00)	July 1, 2009	(74,265)	(74,265)	-	-	-	(148,530)
School Psychologist	Student Intervention Services - ESE	Special Revenue	School Psychologists	2027	D	I	10 Month	(0.40)	August 17, 2009	(21,448)	(21,448)	-	-	-	(42,896)
Staffing Specialist	Student Intervention Services - ESE	General	Itinerant - Staffing	5012	D	I	10 Month	(0.20)	July 1, 2009	(13,736)	(13,736)	-	-	-	(27,472)
Student Service Worker	Student Intervention Services	General	SAI - Att. Officers	3162	D	N	10 Month	(1.00)	July 1, 2009	(66,409)	(66,409)	-	-	-	(132,818)
Teacher - Adaptive P. E.	Student Intervention Services - ESE	General	Itinerant - Adaptive	2017	D	I	10 Month	(1.00)	July 1, 2009	(73,123)	(73,123)	-	-	-	(146,246)
Teacher - Adaptive P. E.	Student Intervention Services - ESE	General	Itinerant - Adaptive	2017	D	I	10 Month	(1.00)	July 1, 2009	(85,566)	(85,566)	-	-	-	(171,132)
Teacher - Hearing Impaired	Student Intervention Services - ESE	General	Itinerant - Hearing	2008	D	I	10 Month	(1.00)	July 1, 2009	(56,025)	(56,025)	-	-	-	(112,050)
Subtotal Other General Fund Projects (14.92)										(884,418)	(884,418)	-	-	-	(1,768,836)
Educational Interpreter - ESE	Student Intervention Services - ESE	Special Revenue	IDEA - Part B	1475	D	N	9 Month	(1.00)	October 21, 2009	(38,700)	(29,961)	-	-	-	(68,661)
School Level Clerk	Curriculum, Instruction & Assessment	Special Revenue	Homeless Grant	0412	D	N	10 Month	(0.20)	July 1, 2009	(5,589)	(5,589)	-	-	-	(11,178)
School Level Clerk	Curriculum, Instruction & Assessment	Special Revenue	Title I	1401	D	N	10 Month	(0.20)	August 10, 2009	(5,147)	(5,147)	-	-	-	(10,294)
School Level Clerk	Student Intervention Services - ESE	Special Revenue	IDEA - Part B - Pre-K	1476	D	N	10 Month	(0.20)	August 10, 2009	(5,147)	(5,147)	-	-	-	(10,294)
Specialist	Curriculum, Instruction & Assessment	Special Revenue	Title I	0401	D	A	12 Month	(0.50)	July 1, 2009	(42,303)	(42,303)	-	-	-	(84,606)
Specialist	Curriculum, Instruction & Assessment	Special Revenue	Homeless Grant	0412	D	A	12 Month	(0.20)	July 1, 2009	(20,150)	(20,150)	-	-	-	(40,300)
Specialist	Staff Development	Special Revenue	Title II	0405	D	A	12 Month	(1.00)	July 1, 2009	(75,830)	(75,830)	-	-	-	(151,660)
Speech Pathologist	Student Intervention Services - ESE	Special Revenue	IDEA - Part B	1475	D	I	12 Month	(0.20)	July 29, 2009	(21,261)	(19,574)	-	-	-	(40,835)
Speech Pathologist	Student Intervention Services - ESE	Special Revenue	IDEA - PreK	0476	D	I	10 Month	(0.12)	July 1, 2009	(7,511)	(7,511)	-	-	-	(15,022)
Staffing Specialist	Student Intervention Services - ESE	Special Revenue	IDEA	0475	D	I	10 Month	(1.79)	July 1, 2009	(148,110)	(148,110)	-	-	-	(296,220)
Subtotal Other Special Revenue Projects (5.41)										(369,748)	(359,322)	-	-	-	(729,070)
Director	Budgeting & Financial Services	General	Discretionary	N/A	N/A	A	12 Month	N/A	July 1, 2009	-	(123,519)	-	-	-	(123,519)
Director	CHOICE	General	Discretionary	N/A	N/A	A	12 Month	N/A	July 1, 2009	-	(110,987)	-	-	-	(110,987)
Director	Curriculum, Instruction & Assessment	General	Discretionary	N/A	N/A	A	12 Month	N/A	July 1, 2009	-	(127,397)	-	-	-	(127,397)
District Level Secretary	Human Resources	General	Discretionary	N/A	N/A	N	12 Month	N/A	July 1, 2009	-	(41,389)	-	-	-	(41,389)
Subtotal Positions to be Held Vacant for Fiscal Year 2009-2010										-	(403,292)	-	-	-	(403,292)
Total Positions Deleted in Reorganization (36.38)										(2,196,128)	(2,531,721)	-	-	-	(4,727,849)
Subtotal Contracts										-	-	-	-	-	-
Total Savings Fiscal Year 2009-2010 (36.38)										\$(2,196,128)	\$(2,531,721)	\$ -	\$ -	\$ -	\$(4,727,849)

**School District of Okaloosa County
District Level Downsizing
Fiscal Year 2009-2010 Action
Revised June 29, 2010**

Position Type	Department Name	Fund	Project Name	Project Number	Position Added (A) / Deleted (D)	Position Code	Number of Months	Position	Effective Date	Fiscal Year 2010-2011 (Savings)	Fiscal Year 2009-2010 (Savings)	Fiscal Year 2008-2009 (Savings)	Fiscal Year 2007-2008 (Savings)	Fiscal Year 2006-2007 (Savings)	Total (Savings)
Accountant	Budgeting & Financial Services	General	Discretionary	N/A	A	N	12 Month	1.00	July 1, 2009	\$ 53,938	\$ 53,938	\$ -	\$ -	\$ -	\$ 107,876
Carpenter	Maintenance Support Services	General	Discretionary	N/A	A	N	12 Month	1.00	July 1, 2009	55,038	55,038	-	-	-	110,076
District Level Clerk	Maintenance Support Services	General	Discretionary	N/A	A	N	12 Month	1.00	July 1, 2009	31,434	31,434	-	-	-	62,868
District Level Secretary	Human Resources	General	Discretionary	N/A	A	N	12 Month	1.00	July 1, 2009	50,934	50,934	-	-	-	101,868
District Level Secretary	Human Resources	General	Discretionary	N/A	A	N	12 Month	1.00	July 1, 2009	32,785	32,785	-	-	-	65,570
District Level Secretary	Information Systems	General	Discretionary	N/A	A	N	12 Month	1.00	July 1, 2009	37,363	37,363	-	-	-	74,726
District Level Secretary	Information Systems	General	Discretionary	N/A	A	N	10 Month	0.53	September 28, 2009	25,216	20,932	-	-	-	46,148
Electrician I	Maintenance Support Services	General	Discretionary	N/A	A	N	12 Month	1.00	July 1, 2009	55,038	55,038	-	-	-	110,076
Foreman	Maintenance Support Services	General	Discretionary	N/A	A	M	12 Month	1.00	September 9, 2009	51,162	51,162	-	-	-	102,324
Heavy Equipment Operator	Maintenance Support Services	General	Discretionary	N/A	A	N	12 Month	1.00	May 20, 2010	38,536	4,588	-	-	-	43,124
Instructional T.V. Broadcast Technician	Information Systems	General	Discretionary	N/A	A	P	12 Month	1.00	July 1, 2009	76,540	76,540	-	-	-	153,080
Plumber I	Maintenance Support Services	General	Discretionary	N/A	A	N	12 Month	1.00	August 3, 2009	46,400	42,165	-	-	-	88,565
Program Director	CHOICE	General	Discretionary	N/A	A	A	12 Month	0.50	July 1, 2009	58,502	58,502	-	-	-	117,004
Site-Based Technician	Maintenance Support Services	General	Discretionary	N/A	A	N	12 Month	1.00	August 3, 2009	36,291	32,979	-	-	-	69,270

Subtotal General Fund - Discretionary 13.03 649,177 603,398 - - - 1,252,575

Custodian II - 12 Month	Maintenance Support Services	General	Grounds/Beautification - School Pilot	0010	A	N	12 Month	1.00	July 1, 2009	44,590	44,590	-	-	-	89,180
Custodian II - 10 Month	Maintenance Support Services	General	Grounds/Beautification - School Pilot	0010	A	N	10 Month	1.00	July 1, 2009	38,209	38,209	-	-	-	76,418
Teacher on Special Assignment	Student Intervention Services	General	SAI - Att. Officers	3162	A	I	10 Month	0.50	July 1, 2009	27,155	27,155	-	-	-	54,310
Warehouse - Grounds Personnel	Maintenance Support Services	General	Grounds/Beautification - School Pilot	0010	A	N	12 Month	1.00	July 1, 2009	37,257	37,257	-	-	-	74,514

Subtotal Other General Fund Projects 2.50 147,211 147,211 - - - 294,422

Accountant	Budgeting & Financial Services	Special Revenue	Stabilization - Education - K12	1460	A	N	12 Month	1.00	July 1, 2009	70,701	70,701	-	-	-	141,402
Assistant Principal II	Curriculum, Instruction & Assessment	Special Revenue	Title I	0401	A	A	12 Month	0.20	July 1, 2009	20,836	20,836	-	-	-	41,672
District Level Secretary	Staff Development	Special Revenue	Title II	0405	A	N	12 Month	0.50	July 1, 2009	27,518	27,518	-	-	-	55,036
Literacy Coach	Staff Development	Special Revenue	Title II	0405	A	I	12 Month	1.00	July 1, 2009	84,509	84,509	-	-	-	169,018
Program Director	Curriculum, Instruction & Assessment	Special Revenue	Title I	0401	A	A	12 Month	0.50	July 1, 2009	47,365	47,365	-	-	-	94,730
School Level Clerk	Curriculum, Instruction & Assessment	Special Revenue	Title I	0401	A	N	10 Month	0.20	July 1, 2009	5,589	5,589	-	-	-	11,178
Specialist	Curriculum, Instruction & Assessment	Special Revenue	Title I	0401	A	A	12 Month	0.20	July 1, 2009	20,150	20,150	-	-	-	40,300
Speech Pathologist	Student Intervention Services - ESE	Special Revenue	IDEA - PreK	0476	A	I	10 Month	0.20	July 1, 2009	17,635	17,635	-	-	-	35,270
Staffing Specialist	Student Intervention Services - ESE	Special Revenue	IDEA - PreK	0476	A	I	12 Month	0.25	July 1, 2009	25,355	25,355	-	-	-	50,710
Speech Pathologist	Student Intervention Services - ESE	Special Revenue	IDEA	0475	A	I	10 Month	0.30	July 1, 2009	20,190	20,190	-	-	-	40,380
Speech Pathologist	Student Intervention Services - ESE	Special Revenue	IDEA	0475	A	I	12 Month	0.65	July 1, 2009	47,961	47,961	-	-	-	95,922
Behavior Analyst	Student Intervention Services - ESE	Special Revenue	IDEA - ARRA	0495	A	I	12 Month	1.00	July 1, 2009	59,021	59,021	-	-	-	118,042
Educational Interpreter - ESE	Student Intervention Services - ESE	Special Revenue	IDEA - ARRA	0495	A	N	9 Month	1.00	July 1, 2009	26,792	26,792	-	-	-	53,584
Occupational Therapist	Student Intervention Services - ESE	Special Revenue	IDEA - ARRA	0495	A	I	10 Month	1.00	July 1, 2009	50,337	50,337	-	-	-	100,674
Occupational Therapist	Student Intervention Services - ESE	Special Revenue	IDEA - ARRA	0495	A	I	10 Month	1.00	July 1, 2009	50,337	50,337	-	-	-	100,674
Occupational Therapist	Student Intervention Services - ESE	Special Revenue	IDEA - ARRA	0495	A	I	10 Month	1.00	July 1, 2009	50,337	50,337	-	-	-	100,674
Occupational Therapist	Student Intervention Services - ESE	Special Revenue	IDEA - ARRA	0495	A	I	10 Month	1.00	July 1, 2009	82,692	82,692	-	-	-	165,384
Occupational Therapist	Student Intervention Services - ESE	Special Revenue	IDEA - ARRA	0495	A	I	10 Month	1.00	July 1, 2009	66,814	66,814	-	-	-	133,628
Physical Therapist	Student Intervention Services - ESE	Special Revenue	IDEA - ARRA	0495	A	I	10 Month	1.00	July 1, 2009	74,265	74,265	-	-	-	148,530
Speech Pathologist	Student Intervention Services - ESE	Special Revenue	IDEA - ARRA	0495	A	I	10 Month	0.10	July 1, 2009	10,246	10,246	-	-	-	20,492
Staffing Specialist	Student Intervention Services - ESE	Special Revenue	IDEA - Part B	1475	A	I	12 Month	0.80	July 1, 2009	70,805	70,805	-	-	-	141,610
Student Service Worker	Student Intervention Services	Special Revenue	IDEA - ARRA	0495	A	N	10 Month	1.00	July 1, 2009	66,409	66,409	-	-	-	132,818
Teacher - Adaptive P. E.	Student Intervention Services - ESE	Special Revenue	IDEA - ARRA	0495	A	I	10 Month	1.00	July 1, 2009	73,123	73,123	-	-	-	146,246
Teacher - Adaptive P. E.	Student Intervention Services - ESE	Special Revenue	IDEA - ARRA	0495	A	I	10 Month	1.00	July 1, 2009	85,566	85,566	-	-	-	171,132
Teacher - Hearing Impaired	Student Intervention Services - ESE	Special Revenue	IDEA - ARRA	0495	A	I	10 Month	1.00	July 1, 2009	56,025	56,025	-	-	-	112,050

Subtotal Other Special Revenue Projects 17.90 1,210,578 1,210,578 - - - 2,421,156

Total Positions Added in Reorganization 33.43 \$ 2,006,966 \$ 1,961,187 \$ - \$ - \$ - \$ 3,968,153

Total Fiscal Year 2009-2010 Net (Savings) Costs (2.95) \$ (189,162) \$ (570,534) \$ - \$ - \$ - \$ (759,696)

Legend:
A Administrative Position
M Managerial Position
I Instructional Position
P Professional/Technical Position
N Educational Support Position
C Non-Bargaining Position

School District of Okaloosa County
District Level Downsizing
Fiscal Year 2008-2009 Action
 Revised June 22, 2009

Position Type	Department Name	Fund	Project Name	Project Number	Position Added (A) /Deleted (D)	Position Code	Number of Months	Position	Effective Date	Fiscal Year 2010-2011 (Savings)	Fiscal Year 2009-2010 (Savings)	Fiscal Year 2008-2009 (Savings)	Fiscal Year 2007-2008 (Savings)	Fiscal Year 2006-2007 (Savings)	Total (Savings)	
Bookkeeper	CHOICE	General	Discretionary	N/A	D	N	12 Month	(0.89)	July 1, 2008	\$ (38,851)	\$ (38,851)	\$ (38,851)	\$ -	\$ -	\$ (116,553)	
Carpenter I	Maintenance Support Services	General	Discretionary	N/A	D	N	12 Month	(1.00)	September 22, 2008	(44,434)	(44,434)	(34,031)	-	-	(122,899)	
Carpenter I	Maintenance Support Services	General	Discretionary	N/A	D	N	12 Month	(1.00)	August 21, 2008	(54,009)	(54,009)	(46,079)	-	-	(154,097)	
Chief Officer	Non-Traditional Schools	General	Discretionary	N/A	D	A	12 Month	(0.15)	July 1, 2008	(21,698)	(21,698)	(21,698)	-	-	(65,094)	
Computer Operator I	Information Systems	General	Discretionary	N/A	D	N	12 Month	(1.00)	November 12, 2008	(57,773)	(57,773)	(35,764)	-	-	(151,310)	
Confidential Secretary	Deputy Supt. - Curr., Instr. & Assessment	General	Discretionary	N/A	D	C	12 Month	(1.00)	July 1, 2008	(42,481)	(42,481)	(42,481)	-	-	(127,443)	
Confidential Secretary	Student Intervention Services	General	Discretionary	N/A	D	C	12 Month	(0.17)	July 1, 2008	(9,206)	(9,206)	(9,206)	-	-	(27,618)	
Coordinator - Professional/Technical	Information Systems	General	Discretionary	N/A	D	P	12 Month	(1.00)	December 17, 2008	(100,245)	(100,245)	(53,305)	-	-	(253,795)	
District Level Secretary	Human Resources	General	Discretionary	N/A	D	N	12 Month	(1.00)	July 1, 2008	(33,808)	(33,808)	(33,808)	-	-	(101,424)	
District Level Secretary	Maintenance Support Services	General	Discretionary	N/A	D	N	12 Month	(1.00)	November 30, 2008	(31,245)	(31,245)	(18,226)	-	-	(80,716)	
District Level Secretary	Risk Management	General	Discretionary	N/A	D	N	10 Month	(0.40)	July 1, 2008	(11,013)	(11,013)	(11,013)	-	-	(33,039)	
District Level Secretary	Risk Management	General	Discretionary	N/A	D	N	12 Month	(0.60)	July 1, 2008	(33,355)	(33,355)	(33,355)	-	-	(100,065)	
Director	CHOICE	General	Discretionary	N/A	D	A	12 Month	(0.95)	July 1, 2008	(102,612)	(102,612)	(102,612)	-	-	(307,836)	
Director	Curriculum, Instruction & Assessment	General	Discretionary	N/A	D	A	12 Month	(0.90)	July 1, 2008	(114,235)	(114,235)	(114,235)	-	-	(342,705)	
Director	Information Systems	General	Discretionary	N/A	D	A	12 Month	(1.00)	April 13, 2009	(124,811)	(124,811)	(28,231)	-	-	(277,853)	
Electrician I	Maintenance Support Services	General	Discretionary	N/A	D	N	12 Month	(1.00)	July 1, 2008	(53,874)	(53,874)	(53,874)	-	-	(161,622)	
Foreman, Warehouse	Maintenance Support Services	General	Discretionary	N/A	D	M	12 Month	(1.00)	August 31, 2008	(61,511)	(61,511)	(51,015)	-	-	(174,037)	
Plumber I	Maintenance Support Services	General	Discretionary	N/A	D	N	12 Month	(1.00)	July 31, 2008	(49,565)	(49,565)	(45,238)	-	-	(144,368)	
Specialist	CHOICE	General	Discretionary	N/A	D	A	12 Month	(0.50)	August 1, 2008	(42,992)	(42,992)	(39,068)	-	-	(125,052)	
Specialist - Construction	CHOICE	General	Discretionary	N/A	D	A	12 Month	(0.95)	July 1, 2008	(89,295)	(89,295)	(89,295)	-	-	(267,885)	
Specialist - Instr. Technology	CHOICE	General	Discretionary	N/A	D	A	12 Month	(0.95)	July 1, 2008	(86,422)	(86,422)	(86,422)	-	-	(259,266)	
Specialist	Student Intervention Services	General	Discretionary	N/A	D	A	12 Month	(0.50)	March 16, 2009	(42,303)	(42,303)	(12,926)	-	-	(97,532)	
Teacher, Technology Trainer	Instructional Technology	General	Discretionary	N/A	D	I	12 Month	(1.00)	July 1, 2008	(86,222)	(86,222)	(86,222)	-	-	(258,666)	
Subtotal General Fund - Discretionary										(18.96)	(1,331,960)	(1,331,960)	(1,086,955)	-	-	(3,750,875)
School Psychologist	Student Intervention Services - ESE	General	School Psych.	2027	D	I	12 Month	(1.00)	August 14, 2008	(103,934)	(103,934)	(90,736)	-	-	(298,604)	
School Secretary	Curriculum, Instruction & Assessment	General	SAI - Closing Gap	7119	D	N	10 Month	(0.40)	August 5, 2008	(2,885)	(2,885)	(2,599)	-	-	(8,369)	
Staffing Specialist	Student Intervention Services - ESE	General	Itinerant - Staffing	5012	D	I	10 Month	(0.10)	December 17, 2008	(5,317)	(5,317)	(2,827)	-	-	(13,461)	
Teacher on Special Assignment	Student Intervention Services	General	SAI - Att. Officers	3162	D	I	10 Month	(1.00)	August 20, 2008	(81,551)	(81,551)	(78,638)	-	-	(241,740)	
Subtotal Other General Fund Projects										(2.50)	(193,687)	(193,687)	(174,800)	-	-	(562,174)
Chief Officer	CHOICE	Special Revenue	Banner	7442	D	A	12 Month	(0.85)	July 1, 2008	(122,955)	(122,955)	(122,955)	-	-	(368,865)	
District Level Secretary	Staff Development	Special Revenue	Title II	9405	D	N	12 Month	(0.50)	August 14, 2008	(19,651)	(19,651)	(17,156)	-	-	(56,458)	
District Level Secretary	Curriculum, Instruction & Assessment	Special Revenue	Title I	9401	D	N	12 Month	(0.50)	August 14, 2008	(19,651)	(19,651)	(17,156)	-	-	(56,458)	
Specialist	Curriculum, Instruction & Assessment	Special Revenue	Title I	9401	D	A	12 Month	(0.56)	February 23, 2009	(48,515)	(48,515)	(17,712)	-	-	(114,742)	
Specialist	Curriculum, Instruction & Assessment	Special Revenue	Title I	9401	D	A	12 Month	(0.20)	July 1, 2008	(15,183)	(15,183)	(15,183)	-	-	(45,549)	
Subtotal Other Special Revenue Projects										(2.61)	(225,955)	(225,955)	(190,162)	-	-	(642,072)
Total Positions Deleted in Reorganization										(24.07)	(1,751,602)	(1,751,602)	(1,451,917)	-	-	(4,955,121)
Subtotal Contracts										-	-	-	-	-	-	
Total Savings Fiscal Year 2008-2009										(24.07)	\$(1,751,602)	\$(1,751,602)	\$(1,451,917)	\$ -	\$ -	\$(4,955,121)

School District of Okaloosa County
District Level Downsizing
Fiscal Year 2008-2009 Action
 Revised June 22, 2009

Position Type	Department Name	Fund	Project Name	Project Number	Position Added (A) / Deleted (D)	Position Code	Number of Months	Position	Effective Date	Fiscal Year 2010-2011 (Savings)	Fiscal Year 2009-2010 (Savings)	Fiscal Year 2008-2009 (Savings)	Fiscal Year 2007-2008 (Savings)	Fiscal Year 2006-2007 (Savings)	Total (Savings)	
Bookkeeper	CHOICE	General	Discretionary	N/A	A	N	12 Month	1.00	July 1, 2008	\$ 43,260	\$ 43,260	\$ 43,260	\$ -	\$ -	\$ 129,780	
Computer Operator II	Information Systems	General	Discretionary	N/A	A	N	12 Month	1.00	November 12, 2008	32,633	32,633	20,201	-	-	85,467	
Director	Curriculum, Instruction & Assessment	General	Discretionary	N/A	A	A	12 Month	1.00	July 1, 2008	126,928	126,928	126,928	-	-	380,784	
Director	CHOICE	General	Discretionary	N/A	A	A	12 Month	1.00	July 1, 2008	108,012	108,012	108,012	-	-	324,036	
District Level Clerk	Human Resources	General	Discretionary	N/A	A	N	12 Month	0.60	February 25, 2009	21,383	21,383	7,637	-	-	50,403	
District Level Custodian	Niceville Adm. Complex	General	Discretionary	N/A	A	N	12 Month	0.14	October 27, 2008	3,554	3,554	2,369	-	-	9,477	
Electrician I	Maintenance Support Services	General	Discretionary	N/A	A	N	12 Month	1.00	September 22, 2008	55,038	55,038	42,152	-	-	152,228	
Office Manager	Deputy Supt. - Curr., Instr. & Assess.	General	Discretionary	N/A	A	P	12 Month	1.00	July 1, 2008	52,218	52,218	52,218	-	-	156,654	
Program Director	Information Systems	General	Discretionary	N/A	A	A	12 Month	1.00	October 27, 2008	87,305	87,305	58,203	-	-	232,813	
Programmer	Information Systems	General	Discretionary	N/A	A	P	12 Month	1.00	October 30, 2008	60,762	60,762	39,785	-	-	161,309	
Site Based Technician	Maintenance Support Services	General	Discretionary	N/A	A	N	12 Month	1.00	August 21, 2008	44,434	44,434	37,910	-	-	126,778	
Specialist	Information Systems	General	Discretionary	N/A	A	A	12 Month	0.20	July 1, 2008	15,183	15,183	15,183	-	-	45,549	
Specialist - Construction	CHOICE	General	Discretionary	N/A	A	A	12 Month	1.00	July 1, 2008	93,016	93,016	93,016	-	-	279,048	
Specialist - Instr. Technology	CHOICE	General	Discretionary	N/A	A	A	12 Month	1.00	July 1, 2008	90,971	90,971	90,971	-	-	272,913	
Teacher, Technology Trainer	Instructional Technology	General	Discretionary	N/A	A	I	12 Month	0.48	July 1, 2008	36,077	36,077	36,077	-	-	108,231	
Teacher, Technology Trainer	Instructional Technology	General	Discretionary	N/A	A	I	12 Month	0.52	July 1, 2008	40,118	40,118	40,118	-	-	120,354	
Subtotal General Fund - Discretionary										12.94	910,892	910,892	814,040	-	-	2,635,824
District Level Clerk	Print Shop	General	Print Shop	9121	A	N	12 Month	0.53	September 8, 2008	18,363	18,363	11,368	-	-	48,094	
Teacher on Special Assignment	Student Intervention Services	General	SAI - Att. Officers	3162	A	I	10 Month	0.50	August 20, 2008	27,155	27,155	26,185	-	-	80,495	
Subtotal Other General Fund Projects										1.03	45,518	45,518	37,553	-	-	128,589
Confidential Secretary	Student Intervention Services	Special Revenue	IDEA	9475	A	N	12 Month	0.17	July 1, 2008	9,206	9,206	-	-	-	18,412	
Specialist	Curriculum, Instruction & Assessment	Special Revenue	Title I	9401	A	A	12 Month	0.50	March 16, 2009	42,303	42,303	12,087	-	-	96,693	
Specialist	Curriculum, Instruction & Assessment	Special Revenue	Title I	9401	A	A	12 Month	0.20	October 27, 2008	17,327	17,327	11,964	-	-	46,618	
Teacher - Title I	Curriculum, Instruction & Assessment	Special Revenue	Title I	9401	A	I	10 Month	0.37	July 31, 2008	25,444	25,444	-	-	-	50,888	
Subtotal Other Special Revenue Projects										1.24	94,280	94,280	24,051	-	-	212,611
Total Positions Added in Reorganization										15.21	\$ 1,050,690	\$ 1,050,690	\$ 875,644	\$ -	\$ -	\$ 2,977,024
Total Fiscal Year 2008-2009 Net (Savings) Costs										(8.86)	\$ (700,912)	\$ (700,912)	\$ (576,273)	\$ -	\$ -	\$(1,978,097)

Legend:
 A Administrative Position
 M Managerial Position
 I Instructional Position
 P Professional/Technical Position
 N Educational Support Position
 C Non-Bargaining Position

**School District of Okaloosa County
District Level Downsizing
Fiscal Year 2007-2008 Action
June 30, 2008**

Position Type	Department Name	Fund	Project Name	Project Number	Position Added (A) /Deleted (D)	Position Code	Number of Months	Position	Effective Date	Fiscal Year 2010-2011 (Savings)	Fiscal Year 2009-2010 (Savings)	Fiscal Year 2008-2009 (Savings)	Fiscal Year 2007-2008 (Savings)	Fiscal Year 2006-2007 (Savings)	Total (Savings)	
Accountant	Budgeting & Financial Services	General	Discretionary	N/A	D	N	12 Month	(1.00)	November 14, 2007	\$ (76,275)	\$ (76,275)	\$ (76,275)	\$ (46,563)	\$ -	\$ (275,388)	
Chief Officer	Chief Officer - Non-Traditional	General	Discretionary	N/A	D	A	12 Month	(0.35)	July 1, 2007	(47,434)	(47,434)	(47,434)	(46,696)	-	(188,998)	
Confidential Secretary	Educational Support Services	General	Discretionary	N/A	D	C	12 Month	(1.00)	July 1, 2007	(55,398)	(55,398)	(55,398)	(55,398)	-	(221,592)	
Confidential Secretary	Chief Officer - Non-Traditional	General	Discretionary	N/A	D	C	12 Month	(0.50)	July 23, 2007	(29,652)	(29,652)	(29,652)	(29,415)	-	(118,371)	
Director - CHOICE	CHOICE	General	Discretionary	N/A	D	A	12 Month	(0.50)	July 1, 2007	(54,007)	(54,007)	(54,007)	(53,263)	-	(215,284)	
Director - Curriculum, Instruction & Assessment	Curriculum, Instruction & Assessment	General	Discretionary	N/A	D	A	12 Month	(0.85)	July 1, 2007	(104,339)	(104,339)	(104,339)	(104,119)	-	(417,136)	
Director	Staff Development	General	Discretionary	N/A	D	A	12 Month	(1.00)	December 31, 2007	(123,595)	(123,595)	(123,595)	(61,980)	-	(432,765)	
District Level Clerk	Human Resources	General	Discretionary	N/A	D	N	12 Month	(1.00)	July 1, 2007	(32,201)	(32,201)	(32,201)	(32,201)	-	(128,804)	
District Level Clerk	Information Systems	General	Discretionary	N/A	D	N	12 Month	(1.00)	July 1, 2007	(36,712)	(36,712)	(36,712)	(35,929)	-	(146,065)	
District Level Secretary	Accounting Operations	General	Discretionary	N/A	D	N	12 Month	(1.00)	January 31, 2008	(53,874)	(53,874)	(53,874)	(22,226)	-	(183,848)	
District Level Secretary	Human Resources	General	Discretionary	N/A	D	N	12 Month	(1.00)	July 1, 2007	(44,631)	(44,631)	(44,631)	(43,771)	-	(177,664)	
District Level Secretary	Human Resources	General	Discretionary	N/A	D	N	12 Month	(1.00)	July 1, 2007	(38,365)	(38,365)	(38,365)	(37,566)	-	(152,661)	
District Level Secretary	Risk Management	General	Discretionary	N/A	D	N	12 Month	(1.00)	July 1, 2007	(38,365)	(38,365)	(38,365)	(37,566)	-	(152,661)	
Evaluation Analyst Confidential	Quality Assurance	General	Discretionary	N/A	D	C	12 Month	(1.00)	July 1, 2007	(41,176)	(41,176)	(41,176)	(41,176)	-	(164,704)	
Program Director	Human Resources	General	Discretionary	N/A	D	A	12 Month	(0.53)	July 1, 2007	(62,846)	(62,846)	(62,846)	(62,846)	-	(251,384)	
Program Director	Information Systems	General	Discretionary	N/A	D	A	12 Month	(1.00)	July 9, 2007	(114,091)	(114,091)	(114,091)	(113,600)	-	(455,873)	
Program Director	Information Systems	General	Discretionary	N/A	D	A	12 Month	(1.00)	November 30, 2007	(113,332)	(113,332)	(113,332)	(64,598)	-	(404,594)	
Program Director	Information Systems	General	Discretionary	N/A	D	A	12 Month	(1.00)	November 30, 2007	(113,332)	(113,332)	(113,332)	(64,598)	-	(404,594)	
Senior Programmer Analyst	Information Systems	General	Discretionary	N/A	D	C	12 Month	(1.00)	November 30, 2007	(99,544)	(99,544)	(99,544)	(62,561)	-	(361,193)	
Senior Programmer Analyst	Information Systems	General	Discretionary	N/A	D	C	12 Month	(1.00)	July 1, 2007	(99,544)	(99,544)	(99,544)	(98,139)	-	(396,771)	
Senior Programmer Analyst	Information Systems	General	Discretionary	N/A	D	C	12 Month	(1.00)	November 30, 2007	(93,629)	(93,629)	(93,629)	(54,476)	-	(335,363)	
Senior Programmer Analyst	Information Systems	General	Discretionary	N/A	D	C	12 Month	(1.00)	November 30, 2007	(100,969)	(100,969)	(100,969)	(59,347)	-	(362,254)	
Senior Programmer Analyst	Information Systems	General	Discretionary	N/A	D	C	12 Month	(1.00)	November 30, 2007	(70,330)	(70,330)	(70,330)	(39,752)	-	(250,742)	
Senior Programmer Analyst	Information Systems	General	Discretionary	N/A	D	C	12 Month	(1.00)	November 30, 2007	(80,691)	(80,691)	(80,691)	(37,286)	-	(279,359)	
Senior Programmer Analyst	Information Systems	General	Discretionary	N/A	D	C	12 Month	(1.00)	November 30, 2007	(84,861)	(84,861)	(84,861)	(50,860)	-	(305,443)	
Senior Programmer Analyst	Information Systems	General	Discretionary	N/A	D	C	12 Month	(1.00)	November 30, 2007	(78,908)	(78,908)	(78,908)	(47,377)	-	(284,101)	
Senior Programmer Analyst	Information Systems	General	Discretionary	N/A	D	C	12 Month	(1.00)	November 30, 2007	(80,691)	(80,691)	(80,691)	(48,384)	-	(290,457)	
Specialist - Construction Technology	CHOICE	General	Discretionary	N/A	D	A	12 Month	(0.75)	July 1, 2007	(69,763)	(69,763)	(69,763)	(68,758)	-	(278,047)	
Specialist - Instr. Technology	CHOICE	General	Discretionary	N/A	D	A	12 Month	(0.75)	July 1, 2007	(68,228)	(68,228)	(68,228)	(67,238)	-	(271,922)	
Specialist - Student Intervention Services	Student Intervention Services	General	Discretionary	N/A	D	A	12 Month	(1.00)	December 11, 2007	(103,090)	(103,090)	(103,090)	(56,700)	-	(365,970)	
Teacher, Technology Trainer	Instructional Technology	General	Discretionary	N/A	D	I	12 Month	(1.00)	July 1, 2007	(88,443)	(88,443)	(88,443)	(88,443)	-	(353,772)	
Subtotal General Fund - Discretionary										(28.23)	(2,298,316)	(2,298,316)	(2,298,316)	(1,732,832)	-	(8,627,780)
District Level Secretary	Student Intervention Services	General	ESOL	4110	D	N	12 Month	(0.29)	August 5, 2007	(10,586)	(10,586)	(10,586)	(10,586)	-	(42,344)	
Chief Officer - Non Traditional Schools	Chief Officer - Non-Traditional	General	Workforce	5110	D	A	12 Month	(0.50)	July 1, 2007	(66,711)	(66,711)	(66,711)	(66,711)	-	(266,844)	
Subtotal Other General Fund Projects										(0.79)	(77,297)	(77,297)	(77,297)	(77,297)	-	(309,188)
Director - CHOICE	CHOICE	Special Revenue	Banner	7442	D	A	12 Month	(0.45)	July 1, 2007	-	-	-	(47,936)	-	(47,936)	
Specialist	Student Intervention Services - ESE	Special Revenue	IDEA	8475	D	A	12 Month	(1.00)	January 14, 2008	(107,157)	(107,157)	(107,157)	(49,669)	-	(371,140)	
Subtotal Other Special Revenue Projects										(1.45)	(107,157)	(107,157)	(107,157)	(97,605)	-	(419,076)
Total Positions Deleted in Reorganization										(30.47)	(2,482,770)	(2,482,770)	(2,482,770)	(1,907,734)	-	(9,356,044)
Subtotal Contracts										-	-	-	-	-	-	-
Total Savings Fiscal Year 2007-2008										(30.47)	\$(2,482,770)	\$(2,482,770)	\$(2,482,770)	\$(1,907,734)	\$ -	\$(9,356,044)

School District of Okaloosa County
District Level Downsizing
Fiscal Year 2007-2008 Action
June 30, 2008

Position Type	Department Name	Fund	Project Name	Project Number	Position Added (A) / Deleted (D)	Position Code	Number of Months	Position	Effective Date	Fiscal Year 2010-2011 (Savings)	Fiscal Year 2009-2010 (Savings)	Fiscal Year 2008-2009 (Savings)	Fiscal Year 2007-2008 (Savings)	Fiscal Year 2006-2007 (Savings)	Total (Savings)	
Bookkeeper	CHOICE	General	Discretionary	N/A	A	N	12 Month	0.89	July 1, 2007	38,851	\$ 38,851	\$ 38,851	\$ 37,775	\$ -	\$ 154,328	
Budget Analyst	Budgeting & Financial Services	General	Discretionary	N/A	A	P	12 Month	1.00	November 14, 2007	81,683	81,683	81,683	50,698	-	295,747	
Coordinator - Administrative	Student Intervention Services	General	Discretionary	N/A	A	P	12 Month	1.00	December 11, 2007	112,045	112,045	112,045	60,785	-	396,920	
Coordinator - Operations & Systems Security	Information Systems	General	Discretionary	N/A	A	P	12 Month	1.00	December 3, 2007	114,889	114,889	114,889	64,598	-	409,265	
Coordinator - Programming Services	Information Systems	General	Discretionary	N/A	A	P	12 Month	1.00	December 3, 2007	112,843	112,843	112,843	63,445	-	401,974	
Coordinator - Programming Services	Information Systems	General	Discretionary	N/A	A	P	12 Month	1.00	December 3, 2007	97,846	97,846	97,846	54,980	-	348,518	
Coordinator - Systems & E-RATE	Information Systems	General	Discretionary	N/A	A	P	12 Month	1.00	December 3, 2007	114,889	114,889	114,889	64,598	-	409,265	
Director - CHOICE	CHOICE	General	Discretionary	N/A	A	A	12 Month	0.95	July 1, 2007	102,612	102,612	102,612	101,197	-	409,033	
Director - Curriculum, Instruction & Assessment	Curriculum, Instruction & Assessment	General	Discretionary	N/A	A	A	12 Month	0.90	July 1, 2007	110,465	110,465	110,465	110,245	-	441,640	
Director - Facilities	Educational Support Services	General	Discretionary	N/A	A	A	12 Month	1.00	July 1, 2007	126,928	126,928	126,928	95,478	-	476,262	
District Level Secretary	Educational Support Services	General	Discretionary	N/A	A	N	12 Month	1.00	July 1, 2007	53,397	53,397	53,397	51,358	-	211,549	
District Level Secretary	Human Resources	General	Discretionary	N/A	A	N	12 Month	1.00	July 1, 2007	43,938	43,938	43,938	43,462	-	175,276	
District Level Secretary	Information Systems	General	Discretionary	N/A	A	N	12 Month	1.00	July 1, 2007	43,207	43,207	43,207	42,359	-	171,980	
District Level Secretary	Risk Management	General	Discretionary	N/A	A	N	10 Month	0.40	October 15, 2007	11,013	11,013	11,013	9,836	-	42,875	
FTE Data Technicians	Information Systems	General	Discretionary	N/A	A	P	12 Month	1.00	January 15, 2008	43,691	43,691	43,691	20,135	-	151,208	
FTE Data Technicians	Information Systems	General	Discretionary	N/A	A	P	12 Month	1.00	January 15, 2008	46,739	46,739	46,739	21,554	-	161,771	
Human Resource Analyst	Human Resources	General	Discretionary	N/A	A	N	12 Month	1.00	July 1, 2007	53,133	53,133	53,133	52,187	-	211,586	
Human Resource Analyst	Human Resources	General	Discretionary	N/A	A	N	12 Month	1.00	July 1, 2007	43,905	43,905	43,905	43,050	-	174,765	
Coordinator - Information Systems	Information Systems	General	Discretionary	N/A	A	P	12 Month	1.00	July 1, 2007	70,331	70,331	70,331	71,296	-	282,289	
Insurance Ombudsman	Risk Management	General	Discretionary	N/A	A	N	12 Month	1.00	July 1, 2007	57,647	57,647	57,647	56,657	-	229,598	
Program Analyst	Information Systems	General	Discretionary	N/A	A	C	12 Month	1.00	December 3, 2007	86,158	86,158	86,158	48,384	-	306,858	
Program Analyst	Information Systems	General	Discretionary	N/A	A	C	12 Month	1.00	December 3, 2007	105,582	105,582	105,582	59,347	-	376,093	
Program Analyst	Information Systems	General	Discretionary	N/A	A	C	12 Month	1.00	December 3, 2007	90,544	90,544	90,544	50,860	-	322,492	
Program Analyst	Information Systems	General	Discretionary	N/A	A	C	12 Month	1.00	December 3, 2007	70,863	70,863	70,863	39,752	-	252,341	
Program Analyst	Information Systems	General	Discretionary	N/A	A	C	12 Month	1.00	December 3, 2007	66,490	66,490	66,490	37,286	-	236,756	
Program Analyst	Information Systems	General	Discretionary	N/A	A	C	12 Month	1.00	December 3, 2007	84,378	84,378	84,378	47,377	-	300,511	
Program Director	Staff Development	General	Discretionary	N/A	A	A	12 Month	1.00	October 9, 2007	114,091	114,091	114,091	83,460	-	425,733	
Site Base Technician	Maintenance Support Services	General	Discretionary	N/A	A	N	12 Month	1.00	July 1, 2007	35,887	35,887	35,887	36,415	-	144,076	
Site Base Technician	Maintenance Support Services	General	Discretionary	N/A	A	N	12 Month	1.00	July 1, 2007	46,325	46,325	46,325	36,415	-	175,390	
Specialist - CHOICE	CHOICE	General	Discretionary	N/A	A	A	12 Month	1.00	December 11, 2007	103,182	103,182	103,182	55,957	-	365,503	
Specialist - Construction Technology	CHOICE	General	Discretionary	N/A	A	A	12 Month	0.96	July 1, 2007	89,295	89,295	89,295	88,009	-	355,894	
Specialist - Instr. Technology	CHOICE	General	Discretionary	N/A	A	A	12 Month	0.95	July 1, 2007	86,422	86,422	86,422	85,166	-	344,432	
Supervisor	Maintenance Support Services	General	Discretionary	N/A	A	M	12 Month	1.00	July 1, 2007	95,706	95,706	95,706	72,341	-	359,459	
Subtotal General Fund - Discretionary										32.05	2,554,975	2,554,975	2,554,975	1,856,462	-	9,521,387
Assistant Principal	District Transfers	General	District Transfers	2031	A	A	12 Month	0.18	July 2, 2007	-	-	-	17,829	-	17,829	
Classroom Assistant	District Transfers	General	District Transfers	2031	A	N	9 Month	1.00	January 7, 2008	-	-	-	17,614	-	17,614	
Principal	District Transfers	General	District Transfers	2031	A	A	12 Month	1.00	May 23, 2008	-	-	-	7,456	-	7,456	
Specialist	District Transfers	General	District Transfers	2031	A	A	12 Month	1.00	May 29, 2008	-	-	-	7,516	-	7,516	
Teacher	District Transfers	General	District Transfers	2031	A	I	12 Month	0.42	December 7, 2007	-	-	-	26,913	-	26,913	
Staffing Specialist	Student Intervention Services - ESE	General	Staffing Specialist	5012	A	I	12 Month	1.00	October 15, 2007	84,316	84,316	84,316	56,481	-	309,429	
Specialist - Closing the Gap	Curriculum, Instruction & Assessment	General	SAI - Closing Gap	7119	A	A	12 Month	1.00	February 11, 2008	103,182	103,182	103,182	24,417	-	333,963	
Subtotal Other General Fund Projects										5.60	187,498	187,498	187,498	158,226	-	720,720
Chief Officer - Non Traditional Schools	Chief Officer - Non-Traditional	Special Revenue	Banner	7442	A	A	12 Month	0.85	July 1, 2007	-	-	-	121,382	-	121,382	
Specialist - Construction Technology	CHOICE	Special Revenue	Banner	7442	A	A	12 Month	0.04	July 1, 2007	-	-	-	3,668	-	3,668	
Specialist - Instr. Technology	CHOICE	Special Revenue	Banner	7442	A	A	12 Month	0.05	July 1, 2007	-	-	-	4,483	-	4,483	
Subtotal Other Special Revenue Projects										0.94	-	-	-	129,533	-	129,533
Total Positions Added in Reorganization										38.59	\$ 2,742,473	\$ 2,742,473	\$ 2,742,473	\$ 2,144,221	\$ -	\$ 10,371,640
Total Fiscal Year 2007-2008 Net (Savings) Costs										8.12	\$ 259,703	\$ 259,703	\$ 259,703	\$ 236,487	\$ -	\$ 1,015,596

Legend:
A Administrative Position
M Managerial Position
I Instructional Position
P Professional/Technical Position
N Educational Support Position
C Non-Bargaining Position

**School District of Okaloosa County
District Level Downsizing
Fiscal Year 2006-2007 Action
June 30, 2008**

Position Type	Department Name	Fund	Project Name	Project Number	Position Added (A) /Deleted (D)	Position Code	Number of Months	Position	Effective Date	Fiscal Year 2010-2011 (Savings)	Fiscal Year 2009-2010 (Savings)	Fiscal Year 2008-2009 (Savings)	Fiscal Year 2007-2008 (Savings)	Fiscal Year 2006-2007 (Savings)	Total (Savings)
Assistant Superintendent - Central	Assistant Superintendent - Central	General	Discretionary	N/A	D	A	12 Month	(1.00)	November 7, 2006	\$ (140,835)	\$ (140,835)	\$ (140,835)	\$ (140,835)	\$ (84,999)	\$ (648,339)
Assistant Superintendent - North	Assistant Superintendent - North	General	Discretionary	N/A	D	A	12 Month	(1.00)	January 31, 2007	(138,174)	(138,174)	(138,174)	(138,174)	(83,377)	(636,073)
Assistant Superintendent - South	Assistant Superintendent - South	General	Discretionary	N/A	D	A	12 Month	(1.00)	November 13, 2006	(131,057)	(131,057)	(131,057)	(131,057)	(79,037)	(603,265)
Chief Officer	Educational Support Services	General	Discretionary	N/A	D	A	12 Month	(1.00)	June 15, 2007	(133,691)	(133,691)	(133,691)	(133,691)	(5,104)	(539,868)
Confidential Secretary	Assistant Superintendent - Central	General	Discretionary	N/A	D	C	12 Month	(1.00)	November 7, 2006	(55,398)	(55,398)	(55,398)	(55,398)	(32,896)	(254,488)
District Level Secretary	Community Affairs	General	Discretionary	N/A	D	N	12 Month	(1.00)	May 14, 2007	(36,415)	(36,415)	(36,415)	(36,415)	(4,702)	(150,362)
District Level Secretary	Student Intervention Services - ESE	General	Discretionary	N/A	D	N	12 Month	(1.00)	March 1, 2007	(53,155)	(53,155)	(53,155)	(53,155)	(17,360)	(229,980)
Program Director	Purchasing	General	Discretionary	N/A	D	A	12 Month	(1.00)	June 12, 2007	(114,242)	(114,242)	(114,242)	(114,242)	(6,095)	(463,063)
Program Director	Student Intervention Services - ESE	General	Discretionary	N/A	D	A	12 Month	(1.00)	January 22, 2007	(113,268)	(113,268)	(113,268)	(113,268)	(66,893)	(519,965)
Specialist	Curriculum, Instruction & Assessment	General	Discretionary	N/A	D	A	12 Month	(1.00)	December 12, 2006	(80,325)	(80,325)	(80,325)	(80,325)	(40,237)	(361,537)
Subtotal General Fund - Discretionary (10.00)										(996,560)	(996,560)	(996,560)	(996,560)	(420,700)	(4,406,940)
Teacher on Special Assignment	Student Intervention Services	General	ESOL - SAI	4110	D	I	10 Month	(1.00)	July 1, 2006	(47,080)	(47,080)	(47,080)	(47,080)	(44,729)	(233,049)
Media Production Technician	Curriculum, Instruction & Assessment	General	Media Services	3111	D	N	12 Month	(1.00)	January 1, 2007	(51,357)	(51,357)	(51,357)	(51,357)	(24,847)	(230,275)
District Level Secretary	Staff Development	General	SEPEC	7015	D	N	12 Month	(1.00)	January 8, 2007	(51,357)	(51,357)	(51,357)	(51,357)	(23,884)	(229,312)
District Level Secretary	Student Intervention Services - ESE	General	School Psychologists	2027	D	N	12 Month	(1.00)	January 9, 2007	(51,357)	(51,357)	(51,357)	(51,357)	(22,535)	(227,963)
Subtotal Other General Fund Projects (4.00)										(201,151)	(201,151)	(201,151)	(201,151)	(115,995)	(920,599)
Total Positions Deleted in Reorganization (14.00)										(1,197,711)	(1,197,711)	(1,197,711)	(1,197,711)	(536,695)	(5,327,539)
Okaloosa Public Schools Foundation Contract	Community Affairs	General	Discretionary	N/A	D	N/A	N/A	N/A	January 4, 2007		(80,000)	(80,000)	(80,000)	(80,000)	(320,000)
Subtotal Contracts -										-	(80,000)	(80,000)	(80,000)	(80,000)	(320,000)
Total Savings Fiscal Year 2006-2007 (14.00)										\$ (1,197,711)	\$ (1,277,711)	\$ (1,277,711)	\$ (1,277,711)	\$ (616,695)	\$ (5,647,539)
Deputy Superintendent	Deputy Superintendent - Curriculum, Instr., & Assess.	General	Discretionary	N/A	A	A	12 Month	1.00	November 14, 2006	\$ 131,057	\$ 131,057	\$ 131,057	\$ 131,057	\$ 79,037	\$ 603,265
Deputy Superintendent	Deputy Superintendent - School Operations	General	Discretionary	N/A	A	A	12 Month	1.00	November 14, 2006	136,985	136,985	136,985	136,985	82,652	630,592
Director	Student Intervention Services - ESE	General	Discretionary	N/A	A	A	12 Month	1.00	January 22, 2007	119,857	119,857	119,857	119,857	45,243	524,671
Director	Purchasing	General	Discretionary	N/A	A	A	12 Month	0.40	June 12, 2007	48,356	48,356	48,356	48,356	2,582	196,006
Director	Accounting and Financial Reporting	General	Discretionary	N/A	A	A	12 Month	1.00	May 21, 2007	118,538	118,538	118,538	118,538	13,557	487,709
District Level Secretary	Human Resources	General	Discretionary	N/A	A	N	12 Month	1.00	May 14, 2007	36,415	36,415	36,415	36,415	4,858	150,518
Subtotal General Fund - Discretionary 5.40										591,208	591,208	591,208	591,208	227,929	2,592,761
Assistant Principal I	District Transfers	General	District Transfers	2031	A	A	12 Month	1.00	February 1, 2007	36,658	36,658	36,658	36,658	44,818	191,450
Assistant Superintendent - North	District Transfers	General	District Transfers	2031	A	A	12 Month	1.00	November 14, 2007	-	-	-	-	32,718	32,718
District Based Teacher	District Transfers	General	District Transfers	2031	A	I	10 Month	1.00	February 13, 2007	-	-	-	-	16,150	16,150
Office Manager	District Transfers	General	District Transfers	2031	A	M	12 Month	1.00	December 1, 2006	-	-	-	-	15,917	15,917
Specialist	Curriculum, Instruction & Assessment	General	SAI	3161	A	A	12 Month	1.00	April 9, 2007	80,325	80,325	80,325	80,325	-	321,300
Specialist	Student Intervention Services	General	SAI	3161	A	A	12 Month	1.00	April 9, 2007	80,325	80,325	80,325	80,325	-	321,300
Subtotal Other General Fund Projects 6.00										197,308	197,308	197,308	197,308	109,603	898,835
Total Positions Added in Reorganization 11.40										788,516	788,516	788,516	788,516	337,532	3,491,596
Total Fiscal Year 2006-2007 Net (Savings) Costs (2.60)										\$ (409,195)	\$ (489,195)	\$ (489,195)	\$ (489,195)	\$ (279,163)	\$ (2,155,943)

Legend:

- A Administrative Position
- M Managerial Position
- I Instructional Position
- P Professional/Technical Position
- N Educational Support Position
- C Non-Bargaining Position